

Received
March 5, 2024
SUP-24-0001
Planning & Zoning



PREVIOUSLY APPROVED BUILDING USE / SQUARE FOOTAGE (SUP-12-002)

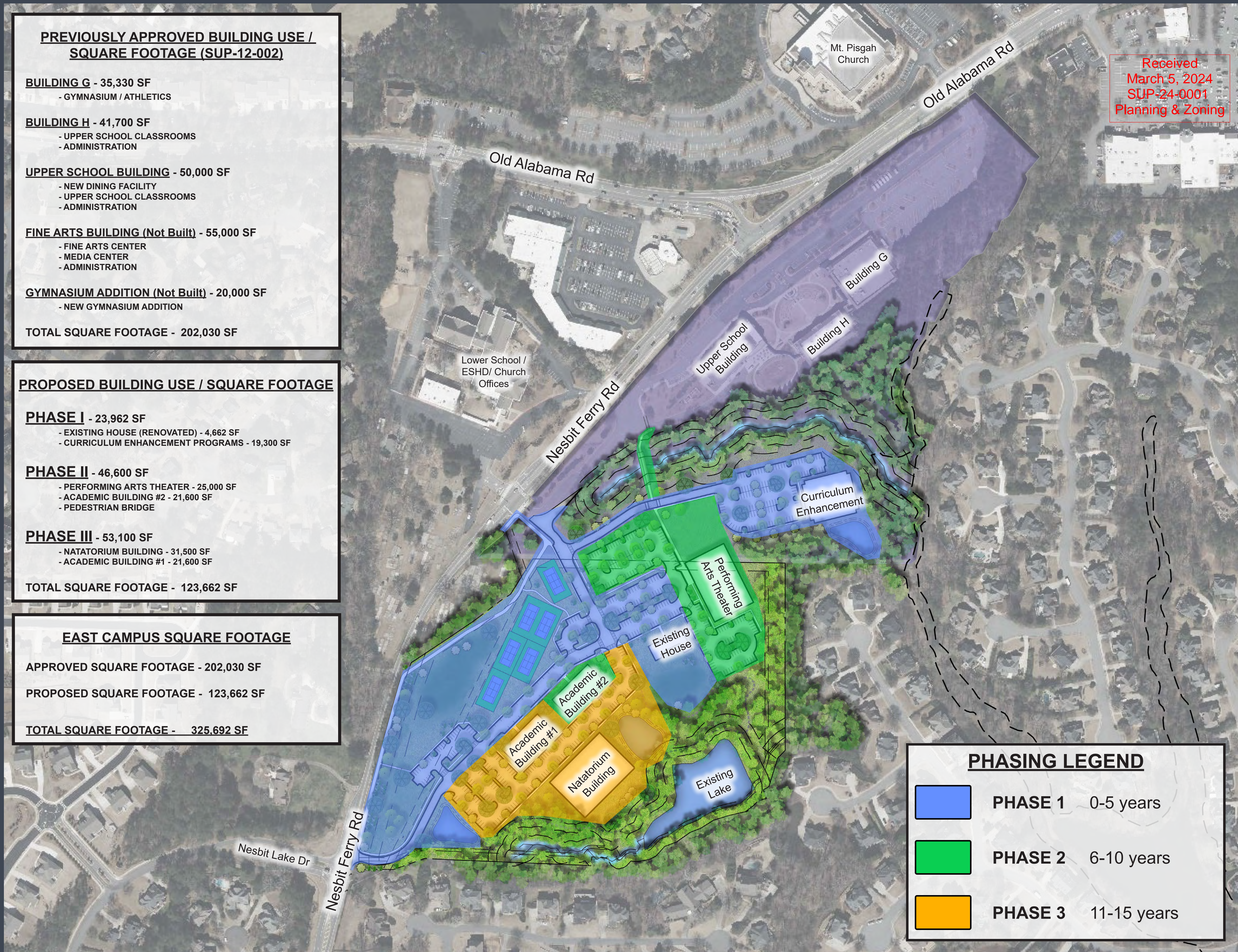
- BUILDING G** - 35,330 SF
- GYMNASIUM / ATHLETICS
- BUILDING H** - 41,700 SF
- UPPER SCHOOL CLASSROOMS
- ADMINISTRATION
- UPPER SCHOOL BUILDING** - 50,000 SF
- NEW DINING FACILITY
- UPPER SCHOOL CLASSROOMS
- ADMINISTRATION
- FINE ARTS BUILDING (Not Built)** - 55,000 SF
- FINE ARTS CENTER
- MEDIA CENTER
- ADMINISTRATION
- GYMNASIUM ADDITION (Not Built)** - 20,000 SF
- NEW GYMNASIUM ADDITION
- TOTAL SQUARE FOOTAGE** - 202,030 SF

PROPOSED BUILDING USE / SQUARE FOOTAGE

- PHASE I** - 23,962 SF
- EXISTING HOUSE (RENOVATED) - 4,662 SF
- CURRICULUM ENHANCEMENT PROGRAMS - 19,300 SF
- PHASE II** - 46,600 SF
- PERFORMING ARTS THEATER - 25,000 SF
- ACADEMIC BUILDING #2 - 21,600 SF
- PEDESTRIAN BRIDGE
- PHASE III** - 53,100 SF
- NATATORIUM BUILDING - 31,500 SF
- ACADEMIC BUILDING #1 - 21,600 SF
- TOTAL SQUARE FOOTAGE** - 123,662 SF

EAST CAMPUS SQUARE FOOTAGE

- APPROVED SQUARE FOOTAGE** - 202,030 SF
- PROPOSED SQUARE FOOTAGE** - 123,662 SF
- TOTAL SQUARE FOOTAGE** - 325,692 SF



Received
March 5, 2024
SUP-24-0001
Planning & Zoning

PHASING LEGEND	
	PHASE 1 0-5 years
	PHASE 2 6-10 years
	PHASE 3 11-15 years