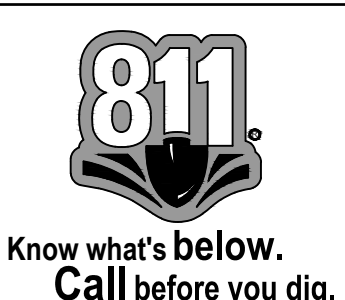


Received
March 5, 2024
SUP-24-0001
Planning & Zoning

AREA TABLE

TRACT 1 AREA	11.798 ACRES
TRACT 2 AREA	3.001 ACRES
TRACT 3 AREA	4.159 ACRES
TRACT 4 AREA	0.424 ACRES
LAKE TRACT	2.133 ACRES
TOTAL AREA	21.515 ACRES



REVISIONS

REV	DATE	DESCRIPTION	BY
5			
4			
3			
2			
1			

LAND LOT(S) 818
DISTRICT 1ST, 2ND SECTION

N/F VANISREE DUDDILLA ETAL TAX PARCEL ID: 12-2920-0818-100-8 DB 53142 PG 1169 PB 199 PG 31 (ST. REGS SUBDIVISION LOT 7)	N/F ONYEKACHI NWACHUKWU TAX PARCEL ID: 12-2920-0818-101-6 DB 66805 PG 681 PB 199 PG 31 (ST. REGS SUBDIVISION LOT 8)	N/F MICHAEL T. WEBER ETAL TAX PARCEL ID: 12-2920-0818-102-4 DB 40982 PG 41 PB 199 PG 31 (ST. REGS SUBDIVISION LOT 9)	N/F SAEIDH L. SADRI ETAL TAX PARCEL ID: 12-2920-0818-103-2 DB 46830 PG 62 DB 41172 PG 319 PB 199 PG 31 (ST. REGS SUBDIVISION LOT 10)	N/F MARKOS & LARISA BAGHDASARIAN TAX PARCEL ID: 12-2920-0818-104-0 DB 41172 PG 319 PB 199 PG 31 (ST. REGS SUBDIVISION LOT 11)	N/F LEE & SARA GAGNON TAX PARCEL ID: 12-2920-0818-105-7 DB 54775 PG 623 PB 199 PG 31 (ST. REGS SUBDIVISION LOT 12)
---	---	--	---	---	--

ALTA/NSPS LAND TITLE SURVEY
FOR
ARROWHEAD



SHEET 1 OF 2
DRAWN BY: FA
CHECKED BY: JNH
FILE NO.: 23037.00
DATE: 07/07/2023
SCALE: 1" = 50'
DATE OF FIELD WORK: 7/5/23

This drawing is the property of Planners and Engineers Collaborative and is not to be used for any other project and is to be returned upon request. © Planners and Engineers Collaborative

J:\2023\23037\03\Drawings\23037-00 - ALTA.dwg - Jonathan... 9/26/2024 9:58 AM

This document is the property of Planners and Engineers Collaborative, Inc. and it shall remain the property of Planners and Engineers Collaborative, Inc. It may not be used for any other project and it shall be returned upon request. Planners and Engineers Collaborative, Inc. 3/9/2024 9:58 AM

STRUCTURE LEGEND

Legend table with categories: CABLE / TV, SEWER, ELECTRIC / POWER, FIBER OPTIC, GAS, PAVEMENT MARKING, PROPERTY MONUMENTS, MISCELLANEOUS, and SITE / TOPOGRAPHIC FEATURES.

LINETYPES

Line types table with categories: PROPERTY, FENCE LINES, and SITE / TOPOGRAPHIC FEATURES.

ABBREVIATIONS

Abbreviations table with columns: APPROX., I.E., and symbols for various features like rebar, curb, fence, drainage, etc.

ALTA/NSPS LAND TITLE SURVEY – TABLE "A" ITEMS

- 1. MONUMENTS PLACED OR FOUND AT ALL MAJOR CORNERS OF THE BOUNDARY OF THE SURVEYED PROPERTY, AND SHOWN HEREON.
2. ADDRESS(ES) OF THE SURVEYED PROPERTY: 9725 NESBIT FERRY ROAD, JOHNS CREEK, GEORGIA 30022
3. FLOOD ZONE INFORMATION IS INCLUDED IN GENERAL NOTES, NOTE 2.
4. GROSS LAND AREA OF SUBJECT PROPERTY IS 11.798 ACRES.

6(A). IF THE CURRENT ZONING CLASSIFICATION, SETBACK REQUIREMENTS, THE HEIGHT AND FLOOR SPACE AREA RESTRICTIONS, AND PARKING REQUIREMENTS SPECIFIC TO THE SURVEYED PROPERTY ARE SET FORTH IN A ZONING REPORT OR LETTER PROVIDED TO THE SURVEYOR BY THE CLIENT OR THE CLIENT'S DESIGNATED REPRESENTATIVE, LIST THE ABOVE ITEMS ON THE PLAT OR MAP AND IDENTIFY THE DATE AND SOURCE OF THE REPORT OR LETTER.

6(B). IF THE ZONING SETBACK REQUIREMENTS SPECIFIC TO THE SURVEYED PROPERTY ARE SET FORTH IN A ZONING REPORT OR LETTER PROVIDED TO THE SURVEYOR BY THE CLIENT OR THE CLIENT'S DESIGNATED REPRESENTATIVE, AND IF THOSE REQUIREMENTS DO NOT REQUIRE AN INTERPRETATION BY THE SURVEYOR, GRAPHICALLY DEPICT THOSE REQUIREMENTS ON THE PLAT OR MAP AND IDENTIFY THE DATE AND SOURCE OF THE REPORT OR LETTER.

8. SUBSTANTIAL FEATURES OBSERVED IN THE PROCESS OF CONDUCTING THE FIELDWORK ARE SHOWN HEREON.

10. THERE ARE NO ENCROACHMENTS ONTO ADJOINING PREMISES, STREETS OR ALLEYS BY ANY BUILDINGS, STRUCTURES OR OTHER IMPROVEMENTS LOCATED ON THE PROPERTY, AND NO ENCROACHMENTS ONTO THE PROPERTY BY BUILDINGS, STRUCTURES OR OTHER IMPROVEMENTS SITUATED ON ADJOINING PREMISES, EXCEPT AS FOLLOWS:

- a) POWER LINE AND CHAINLINK FENCE CROSSING PROPERTY NEAR CEMETERY AT THE NORTHWEST CORNER OF THE PROPERTY.
b) WATER LINE, GAS LINE, ASPHALT DRIVEWAY, AND POWER LINE CROSSING PROPERTY LINE AT THE SOUTHWEST CORNER OF THE PROPERTY.

11. OBSERVED EVIDENCE OF UNDERGROUND UTILITIES EXISTING ON OR SERVING THE SURVEYED PROPERTY LOCATED AND SHOWN HEREON, NO ADDITIONAL LOCATE OR INVESTIGATION OF UTILITIES REQUESTED BY THE CLIENT.

13. ADJACENT OWNER INFORMATION IS SHOWN HEREON AS REQUIRED BY GEORGIA STANDARDS.

16. NO EVIDENCE OF RECENT EARTH MOVING WORK, BUILDING CONSTRUCTION, OR BUILDING ADDITIONS OBSERVED IN THE PROCESS OF CONDUCTING THE FIELDWORK.

17. NO PROPOSED CHANGES IN STREET RIGHT OF WAY LINES IF SUCH INFORMATION IS MADE AVAILABLE TO THE SURVEYOR BY THE CONTROLLING JURISDICTION. NO EVIDENCE OF RECENT STREET OR SIDEWALK CONSTRUCTION OR REPAIRS OBSERVED IN THE PROCESS OF CONDUCTING THE FIELDWORK.

NOTES

1. THE UNDERGROUND UTILITIES SHOWN HAVE BEEN LOCATED FROM FIELD SURVEY INFORMATION AND EXISTING DRAWINGS. THIS SURVEYOR MAKES NO GUARANTEE THAT THE UNDERGROUND UTILITIES SHOWN COMPRISE ALL SUCH UTILITIES IN THE AREA, EITHER IN SERVICE OR ABANDONED. THE SURVEYOR FURTHER DOES NOT WARRANT THAT THE UNDERGROUND UTILITIES SHOWN ARE IN THE EXACT LOCATION INDICATED ALTHOUGH HE DOES CERTIFY THAT THEY ARE LOCATED AS ACCURATELY AS POSSIBLE FROM INFORMATION SUPPLIED AND TO THE SURVEYOR'S BEST KNOWLEDGE ARE APPROXIMATELY AS SHOWN. THE SURVEYOR HAS NOT PHYSICALLY LOCATED THE UNDERGROUND UTILITIES. ALL UTILITIES SERVING THE PROPERTY ENTER THROUGH ADJOINING PUBLIC STREETS AND/OR EASEMENTS OF RECORD.

2. I HAVE EXAMINED THE FEDERAL EMERGENCY MANAGEMENT AGENCY FLOOD INSURANCE RATE MAP FOR FULTON COUNTY, GEORGIA AND INCORPORATED AREAS, COMMUNITY PANEL NUMBER 13121C0069F; PANEL 69 OF 490, EFFECTIVE DATE SEPTEMBER 18, 2013 AND FOUND NO PORTION OF THE PROPERTY SHOWN HEREON TO FALL WITHIN A DESIGNATED FLOOD ZONE "A" (AREAS OF 100 YEAR FLOOD). THE PROPERTY SHOWN HEREON TO FALL WITHIN A DESIGNATED FLOOD ZONE "X" (AREAS DETERMINED TO BE OUTSIDE THE 0.2% ANNUAL CHANCE FLOOD).

3. THE ORTHOMETRIC HEIGHTS (ELEVATIONS AND CONTOURS) SHOWN HEREON WERE DETERMINED BY GPS OBSERVATIONS AND WERE ADJUSTED BY PLANNERS AND ENGINEERS COLLABORATIVE IN JUNE 2023. NORTH AMERICAN DATUM OF 1983 (NAD83), NORTH AMERICAN VERTICAL DATUM OF 1988 (NAVD88), GEORGIA WEST ZONE STATE PLANE COORDINATES.

4. THE TERM "CERTIFICATION" RELATING TO PROFESSIONAL ENGINEERING AND LAND SURVEYING SERVICES SHALL MEAN A SIGNED STATEMENT BASED UPON FACTS AND KNOWLEDGE KNOWN TO THE REGISTRANT AND IS NOT A GUARANTEE OR WARRANTY, EITHER EXPRESSED OR IMPLIED.

5. THIS SURVEY HAS BEEN PREPARED WITHOUT THE BENEFIT OF A CURRENT TITLE INSPECTION REPORT. EASEMENTS OR OTHER ENCUMBRANCES MAY EXIST ON PUBLIC RECORD BUT NOT BE SHOWN HEREON.

6. NO ZONING INFORMATION PROVIDED FOR BUILDING SETBACKS.

7. THIS SURVEY WAS MADE IN ACCORDANCE WITH LAWS AND/OR MINIMUM STANDARDS OF THE STATE OF GEORGIA.

8. THE PROPERTY HAS DIRECT ACCESS TO NESBIT FERRY ROAD, A DEDICATED PUBLIC STREET OR HIGHWAY.

9. THERE IS NO OBSERVED EVIDENCE OF USE OF THE PROPERTY AS A SOLID WASTE DUMP, SUMP OR SANITARY LANDFILL.

LEGAL DESCRIPTION – TRACT 1

ALL THAT TRACT OR PARCEL OF LAND LYING AND BEING IN LAND LOT 818 OF THE 1ST DISTRICT, 2ND/SECTION, FULTON COUNTY, GEORGIA, AND BEING MORE PARTICULARLY DESCRIBED AS FOLLOWS:

BEGIN AT A FOUND 1/2 INCH REBAR LOCATED AT THE COMMON LAND LOT CORNER BETWEEN LAND LOTS 817, 818, 839, AND 840, SAID REBAR BEING THE TRUE POINT OF BEGINNING, FROM THE TRUE POINT OF BEGINNING, THENCE ALONG SAID COMMON LAND LOT LINE BETWEEN LAND LOTS 818 AND 839 THE FOLLOWING COURSES AND DISTANCES: SOUTH 00 DEGREES 05 MINUTES 09 SECONDS WEST A DISTANCE OF 283.47 FEET TO A FOUND 1 INCH OPEN TOP PIPE; SOUTH 00 DEGREES 09 MINUTES 59 SECONDS EAST A DISTANCE OF 274.35 FEET TO A FOUND 1 1/2 INCH REBAR; THENCE LEAVING SAID COMMON LAND LOT LINE BETWEEN LAND LOTS 818 AND 839 AND PROCEED SOUTH 43 DEGREES 53 MINUTES 16 SECONDS WEST A DISTANCE OF 32.85 FEET TO A FOUND 1/2 INCH REBAR; THENCE NORTH 49 DEGREES 13 MINUTES 09 SECONDS WEST A DISTANCE OF 136.60 FEET TO A SET 1/2 INCH REBAR WITH CAP; THENCE NORTH 52 DEGREES 43 MINUTES 43 SECONDS EAST A DISTANCE OF 167.00 FEET TO A SET 1/2 INCH REBAR WITH CAP; THENCE NORTH 31 DEGREES 16 MINUTES 12 SECONDS WEST A DISTANCE OF 34.00 FEET TO A SET 1/2 INCH REBAR WITH CAP; THENCE SOUTH 58 DEGREES 43 MINUTES 43 SECONDS WEST A DISTANCE OF 37.00 FEET TO A POINT; THENCE SOUTH 45 DEGREES 57 MINUTES 43 SECONDS WEST A DISTANCE OF 47.90 FEET TO A POINT; THENCE SOUTH 43 DEGREES 53 MINUTES 43 SECONDS WEST A DISTANCE OF 38.90 FEET TO A POINT; THENCE SOUTH 48 DEGREES 35 MINUTES 43 SECONDS WEST A DISTANCE OF 15.40 FEET TO A POINT; THENCE SOUTH 24 DEGREES 24 MINUTES 43 SECONDS WEST A DISTANCE OF 31.40 FEET TO A POINT; THENCE SOUTH 58 DEGREES 10 MINUTES 43 SECONDS WEST A DISTANCE OF 28.60 FEET TO A POINT; THENCE NORTH 88 DEGREES 18 MINUTES 17 SECONDS WEST A DISTANCE OF 27.60 FEET TO A POINT; THENCE SOUTH 70 DEGREES 52 MINUTES 43 SECONDS WEST A DISTANCE OF 33.70 FEET TO A POINT; THENCE SOUTH 55 DEGREES 01 MINUTES 43 SECONDS WEST A DISTANCE OF 8.90 FEET TO A POINT; THENCE SOUTH 47 DEGREES 54 MINUTES 30 SECONDS WEST A DISTANCE OF 2.64 FEET TO A FOUND 1 1/4 INCH OPEN TOP PIPE; THENCE NORTH 47 DEGREES 56 MINUTES 14 SECONDS WEST A DISTANCE OF 223.12 FEET TO A SET 1/2 INCH REBAR WITH CAP; THENCE NORTH 31 DEGREES 43 MINUTES 12 SECONDS WEST A DISTANCE OF 80.15 FEET TO A FOUND 1 1/4 INCH OPEN TOP PIPE; THENCE SOUTH 33 DEGREES 03 MINUTES 22 SECONDS WEST A DISTANCE OF 55.94 FEET TO A POINT; THENCE NORTH 43 DEGREES 53 MINUTES 43 SECONDS WEST A DISTANCE OF 25.00 FEET TO A POINT; THENCE SOUTH 41 DEGREES 05 MINUTES 43 SECONDS WEST A DISTANCE OF 25.00 FEET TO A POINT; THENCE SOUTH 45 DEGREES 13 MINUTES 43 SECONDS WEST A DISTANCE OF 25.00 FEET TO A POINT; THENCE SOUTH 65 DEGREES 01 MINUTES 43 SECONDS WEST A DISTANCE OF 25.00 FEET TO A POINT; THENCE SOUTH 72 DEGREES 38 MINUTES 43 SECONDS WEST A DISTANCE OF 25.00 FEET TO A POINT; THENCE SOUTH 79 DEGREES 31 MINUTES 43 SECONDS WEST A DISTANCE OF 25.00 FEET TO A POINT; THENCE SOUTH 86 DEGREES 44 MINUTES 43 SECONDS WEST A DISTANCE OF 25.00 FEET TO A POINT; THENCE NORTH 15 DEGREES 15 MINUTES 37 SECONDS EAST A DISTANCE OF 25.25 FEET TO A FOUND 1 1/4 INCH OPEN TOP PIPE; THENCE NORTH 71 DEGREES 23 MINUTES 51 SECONDS WEST A DISTANCE OF 24.79 FEET TO A POINT; THENCE SOUTH 57 DEGREES 32 MINUTES 17 SECONDS WEST A DISTANCE OF 139.60 FEET TO A SET 1/2 INCH REBAR WITH CAP; THENCE SOUTH 77 DEGREES 35 MINUTES 43 SECONDS WEST A DISTANCE OF 73.75 FEET TO A FOUND 1 1/4 INCH OPEN TOP PIPE; THENCE SOUTH 77 DEGREES 35 MINUTES 43 SECONDS WEST A DISTANCE OF 35.45 FEET TO A FOUND 1 1/4 INCH OPEN TOP PIPE; NORTH 15 DEGREES 15 MINUTES 37 SECONDS EAST A DISTANCE OF 71.35 FEET TO A POINT; NORTH 17 DEGREES 09 MINUTES 20 SECONDS EAST A DISTANCE OF 68.27 FEET TO A POINT; NORTH 20 DEGREES 20 MINUTES 46 SECONDS EAST A DISTANCE OF 41.83 FEET TO A POINT; THENCE ALONG THE EASTERLY RIGHT OF WAY OF NESBIT FERRY ROAD THE FOLLOWING COURSES AND DISTANCES: NORTH 15 DEGREES 11 MINUTES 12 SECONDS EAST A DISTANCE OF 33.45 FEET TO A POINT; THENCE SOUTH 11 DEGREES 22 MINUTES 52 SECONDS EAST A DISTANCE OF 17.35 FEET TO A POINT; NORTH 17 DEGREES 09 MINUTES 20 SECONDS EAST A DISTANCE OF 68.27 FEET TO A POINT; NORTH 20 DEGREES 20 MINUTES 46 SECONDS EAST A DISTANCE OF 41.83 FEET TO A POINT; THENCE ALONG THE EASTERLY RIGHT OF WAY OF NESBIT FERRY ROAD THE FOLLOWING COURSES AND DISTANCES: NORTH 15 DEGREES 11 MINUTES 12 SECONDS EAST A DISTANCE OF 33.45 FEET TO A POINT; THENCE SOUTH 11 DEGREES 22 MINUTES 52 SECONDS EAST A DISTANCE OF 17.35 FEET TO A POINT; NORTH 17 DEGREES 09 MINUTES 20 SECONDS EAST A DISTANCE OF 68.27 FEET TO A POINT; NORTH 20 DEGREES 20 MINUTES 46 SECONDS EAST A DISTANCE OF 41.83 FEET TO A FOUND 1 INCH OPEN TOP PIPE; THENCE SOUTH 56 DEGREES 00 MINUTES 43 SECONDS WEST A DISTANCE OF 100.10 FEET TO A FOUND 1 INCH OPEN TOP PIPE; THENCE NORTH 52 DEGREES 57 MINUTES 43 SECONDS EAST A DISTANCE OF 109.00 FEET TO A SET 1/2 INCH REBAR WITH CAP; THENCE NORTH 17 DEGREES 17 MINUTES 43 SECONDS EAST A DISTANCE OF 27.70 FEET TO A FOUND 1 INCH OPEN TOP PIPE; THENCE NORTH 32 DEGREES 16 MINUTES 43 SECONDS EAST A DISTANCE OF 125.20 FEET TO A SET 1/2 INCH REBAR WITH CAP ON SAID COMMON LAND LOT LINE BETWEEN LAND LOTS 817 AND 818; THENCE ALONG SAID COMMON LAND LOT LINE BETWEEN LAND LOTS 817 AND 818 THE FOLLOWING COURSES AND DISTANCES: SOUTH 89 DEGREES 01 MINUTES 31 SECONDS EAST A DISTANCE OF 213.96 FEET TO A FOUND 1/2 INCH REBAR, SAID REBAR BEING THE TRUE POINT OF BEGINNING.

TRACT OR PARCEL CONTAINS 513,920 SQUARE FEET OR 11.798 ACRES.

LEGAL DESCRIPTION – TRACT 2

ALL THAT TRACT OR PARCEL OF LAND LYING AND BEING IN LAND LOT 818 OF THE 1ST DISTRICT, 2ND/SECTION, FULTON COUNTY, GEORGIA, AND BEING MORE PARTICULARLY DESCRIBED AS FOLLOWS:

BEGIN AT A SET 1/2 INCH REBAR LOCATED ALONG THE SOUTHEASTERLY RIGHT-OF-WAY (R/W) LINE OF NESBIT FERRY ROAD (60' R/W PUBLIC), HAVING COORDINATES OF NORTH:1460550.69 AND EAST:2262048.93, COORDINATES BASED ON NAD83 STATE PLANE COORDINATE SYSTEM, GEORGIA WEST ZONE, SAID POINT BEING THE TRUE POINT OF BEGINNING, FROM THE TRUE POINT OF BEGINNING AS THUS ESTABLISHED; THENCE NORTH 14 DEGREES 27 MINUTES 13 SECONDS EAST A DISTANCE OF 143.45 FEET TO A FOUND 1-1/4 INCH OPEN TOP PIPE; THENCE NORTH 77 DEGREES 35 MINUTES 43 SECONDS WEST A DISTANCE OF 283.47 FEET TO A SET 1/2 INCH REBAR; THENCE SOUTH 77 DEGREES 35 MINUTES 43 SECONDS EAST A DISTANCE OF 274.35 FEET TO A POINT; THENCE SOUTH 77 DEGREES 35 MINUTES 43 SECONDS WEST A DISTANCE OF 32.85 FEET TO A POINT; THENCE NORTH 49 DEGREES 13 MINUTES 09 SECONDS WEST A DISTANCE OF 136.60 FEET TO A SET 1/2 INCH REBAR WITH CAP; THENCE SOUTH 52 DEGREES 43 MINUTES 43 SECONDS WEST A DISTANCE OF 167.00 FEET TO A POINT; THENCE NORTH 31 DEGREES 16 MINUTES 12 SECONDS WEST A DISTANCE OF 34.00 FEET TO A SET 1/2 INCH REBAR WITH CAP; THENCE SOUTH 58 DEGREES 43 MINUTES 43 SECONDS WEST A DISTANCE OF 37.00 FEET TO A POINT; THENCE SOUTH 45 DEGREES 57 MINUTES 43 SECONDS WEST A DISTANCE OF 47.90 FEET TO A POINT; THENCE SOUTH 43 DEGREES 53 MINUTES 43 SECONDS WEST A DISTANCE OF 38.90 FEET TO A POINT; THENCE SOUTH 48 DEGREES 35 MINUTES 43 SECONDS WEST A DISTANCE OF 15.40 FEET TO A POINT; THENCE SOUTH 24 DEGREES 24 MINUTES 43 SECONDS WEST A DISTANCE OF 31.40 FEET TO A POINT; THENCE SOUTH 58 DEGREES 10 MINUTES 43 SECONDS WEST A DISTANCE OF 28.60 FEET TO A POINT; THENCE NORTH 88 DEGREES 18 MINUTES 17 SECONDS WEST A DISTANCE OF 27.60 FEET TO A POINT; THENCE SOUTH 70 DEGREES 52 MINUTES 43 SECONDS WEST A DISTANCE OF 33.70 FEET TO A POINT; THENCE SOUTH 55 DEGREES 01 MINUTES 43 SECONDS WEST A DISTANCE OF 8.90 FEET TO A POINT; THENCE SOUTH 47 DEGREES 54 MINUTES 30 SECONDS WEST A DISTANCE OF 2.64 FEET TO A FOUND 1 1/4 INCH REBAR; THENCE NORTH 47 DEGREES 56 MINUTES 14 SECONDS WEST A DISTANCE OF 223.12 FEET TO A FOUND 1-1/4 INCH OPEN TOP PIPE; THENCE SOUTH 34 DEGREES 01 MINUTES 49 SECONDS WEST A DISTANCE OF 81.00 FEET TO A POINT; THENCE SOUTH 19 DEGREES 30 MINUTES 49 SECONDS WEST A DISTANCE OF 7.00 FEET TO A POINT; THENCE SOUTH 04 DEGREES 00 MINUTES 49 SECONDS WEST A DISTANCE OF 9.10 FEET TO A POINT; THENCE SOUTH 06 DEGREES 01 MINUTES 11 SECONDS EAST A DISTANCE OF 81.70 FEET TO A POINT; THENCE SOUTH 23 DEGREES 05 MINUTES 11 SECONDS EAST A DISTANCE OF 4.20 FEET TO A POINT; THENCE SOUTH 43 DEGREES 53 MINUTES 43 SECONDS WEST A DISTANCE OF 46.00 FEET TO A POINT; THENCE SOUTH 60 DEGREES 03 MINUTES 49 SECONDS WEST A DISTANCE OF 34.50 FEET TO A POINT; THENCE SOUTH 31 DEGREES 34 MINUTES 49 SECONDS WEST A DISTANCE OF 50.00 FEET TO A POINT; THENCE SOUTH 53 DEGREES 33 MINUTES 49 SECONDS WEST A DISTANCE OF 3.90 FEET TO A POINT; THENCE SOUTH 70 DEGREES 59 MINUTES 49 SECONDS WEST A DISTANCE OF 40.50 FEET TO A POINT; THENCE SOUTH 55 DEGREES 48 MINUTES 49 SECONDS WEST A DISTANCE OF 33.90 FEET TO A POINT; THENCE SOUTH 21 DEGREES 37 MINUTES 49 SECONDS WEST A DISTANCE OF 28.60 FEET TO A POINT; THENCE SOUTH 09 DEGREES 58 MINUTES 49 SECONDS WEST A DISTANCE OF 11.30 FEET TO A POINT; THENCE SOUTH 20 DEGREES 58 MINUTES 49 SECONDS WEST A DISTANCE OF 11.10 FEET TO A POINT; THENCE SOUTH 21 DEGREES 37 MINUTES 46 SECONDS WEST A DISTANCE OF 7.25 FEET TO A FOUND 1-1/4 INCH OPEN TOP PIPE; THENCE NORTH 85 DEGREES 27 MINUTES 57 SECONDS WEST A DISTANCE OF 49.34 FEET TO A POINT; THENCE NORTH 03 DEGREES 43 MINUTES 34 SECONDS EAST A DISTANCE OF 96.98 FEET TO A FOUND 1-1/4 INCH OPEN TOP PIPE; THENCE NORTH 84 DEGREES 03 MINUTES 29 SECONDS WEST A DISTANCE OF 148.20 FEET TO A FOUND 1/2 INCH REBAR; THENCE NORTH 01 DEGREES 55 MINUTES 06 SECONDS WEST A DISTANCE OF 146.62 FEET TO A FOUND 1-1/4 INCH OPEN TOP PIPE AND THE TRUE POINT OF BEGINNING.

TRACT OR PARCEL CONTAINS 3,001 ACRES (130,712 SQUARE FEET).

LEGAL DESCRIPTION – TRACT 3

ALL THAT TRACT OR PARCEL OF LAND LYING AND BEING IN LAND LOT 818 OF THE 1ST DISTRICT, 2ND/SECTION, FULTON COUNTY, GEORGIA, AND BEING MORE PARTICULARLY DESCRIBED AS FOLLOWS:

BEGIN AT A SET 1/2 INCH REBAR LOCATED ALONG THE SOUTHEASTERLY RIGHT-OF-WAY (R/W) LINE OF NESBIT FERRY ROAD (60' R/W PUBLIC), HAVING COORDINATES OF NORTH:1460550.69 AND EAST:2262048.93, COORDINATES BASED ON NAD83 STATE PLANE COORDINATE SYSTEM, GEORGIA WEST ZONE, SAID POINT BEING THE TRUE POINT OF BEGINNING, FROM THE TRUE POINT OF BEGINNING AS THUS ESTABLISHED; THENCE NORTH 14 DEGREES 27 MINUTES 13 SECONDS EAST A DISTANCE OF 143.45 FEET TO A FOUND 1-1/4 INCH OPEN TOP PIPE; THENCE NORTH 77 DEGREES 35 MINUTES 43 SECONDS EAST A DISTANCE OF 283.47 FEET TO A SET 1/2 INCH REBAR; THENCE SOUTH 77 DEGREES 35 MINUTES 43 SECONDS WEST A DISTANCE OF 274.35 FEET TO A POINT; THENCE SOUTH 77 DEGREES 35 MINUTES 43 SECONDS WEST A DISTANCE OF 32.85 FEET TO A POINT; THENCE NORTH 49 DEGREES 13 MINUTES 09 SECONDS WEST A DISTANCE OF 136.60 FEET TO A SET 1/2 INCH REBAR WITH CAP; THENCE SOUTH 52 DEGREES 43 MINUTES 43 SECONDS WEST A DISTANCE OF 167.00 FEET TO A POINT; THENCE NORTH 31 DEGREES 16 MINUTES 12 SECONDS WEST A DISTANCE OF 34.00 FEET TO A SET 1/2 INCH REBAR WITH CAP; THENCE SOUTH 58 DEGREES 43 MINUTES 43 SECONDS WEST A DISTANCE OF 37.00 FEET TO A POINT; THENCE SOUTH 45 DEGREES 57 MINUTES 43 SECONDS WEST A DISTANCE OF 47.90 FEET TO A POINT; THENCE SOUTH 43 DEGREES 53 MINUTES 43 SECONDS WEST A DISTANCE OF 38.90 FEET TO A POINT; THENCE SOUTH 48 DEGREES 35 MINUTES 43 SECONDS WEST A DISTANCE OF 15.40 FEET TO A POINT; THENCE SOUTH 24 DEGREES 24 MINUTES 43 SECONDS WEST A DISTANCE OF 31.40 FEET TO A POINT; THENCE SOUTH 58 DEGREES 10 MINUTES 43 SECONDS WEST A DISTANCE OF 28.60 FEET TO A POINT; THENCE NORTH 88 DEGREES 18 MINUTES 17 SECONDS WEST A DISTANCE OF 27.60 FEET TO A POINT; THENCE SOUTH 70 DEGREES 52 MINUTES 43 SECONDS WEST A DISTANCE OF 33.70 FEET TO A POINT; THENCE SOUTH 55 DEGREES 01 MINUTES 43 SECONDS WEST A DISTANCE OF 8.90 FEET TO A POINT; THENCE SOUTH 47 DEGREES 54 MINUTES 30 SECONDS WEST A DISTANCE OF 2.64 FEET TO A FOUND 1 1/4 INCH OPEN TOP PIPE; THENCE NORTH 47 DEGREES 56 MINUTES 14 SECONDS WEST A DISTANCE OF 223.12 FEET TO A SET 1/2 INCH REBAR WITH CAP; THENCE NORTH 31 DEGREES 43 MINUTES 12 SECONDS WEST A DISTANCE OF 80.15 FEET TO A FOUND 1 1/4 INCH OPEN TOP PIPE; THENCE SOUTH 33 DEGREES 03 MINUTES 22 SECONDS WEST A DISTANCE OF 55.94 FEET TO A POINT; THENCE NORTH 43 DEGREES 53 MINUTES 43 SECONDS WEST A DISTANCE OF 25.00 FEET TO A POINT; THENCE SOUTH 41 DEGREES 05 MINUTES 43 SECONDS WEST A DISTANCE OF 25.00 FEET TO A POINT; THENCE SOUTH 45 DEGREES 13 MINUTES 43 SECONDS WEST A DISTANCE OF 25.00 FEET TO A POINT; THENCE SOUTH 65 DEGREES 01 MINUTES 43 SECONDS WEST A DISTANCE OF 25.00 FEET TO A POINT; THENCE SOUTH 72 DEGREES 38 MINUTES 43 SECONDS WEST A DISTANCE OF 25.00 FEET TO A POINT; THENCE SOUTH 79 DEGREES 31 MINUTES 43 SECONDS WEST A DISTANCE OF 25.00 FEET TO A POINT; THENCE SOUTH 86 DEGREES 44 MINUTES 43 SECONDS WEST A DISTANCE OF 25.00 FEET TO A POINT; THENCE NORTH 15 DEGREES 15 MINUTES 37 SECONDS EAST A DISTANCE OF 25.25 FEET TO A FOUND 1 1/4 INCH OPEN TOP PIPE; THENCE NORTH 71 DEGREES 23 MINUTES 51 SECONDS WEST A DISTANCE OF 24.79 FEET TO A POINT; THENCE SOUTH 57 DEGREES 32 MINUTES 17 SECONDS WEST A DISTANCE OF 139.60 FEET TO A SET 1/2 INCH REBAR WITH CAP; THENCE SOUTH 77 DEGREES 35 MINUTES 43 SECONDS WEST A DISTANCE OF 73.75 FEET TO A SET 1/2 INCH REBAR; THENCE SOUTH 77 DEGREES 35 MINUTES 43 SECONDS WEST A DISTANCE OF 35.45 FEET TO A FOUND 1 1/4 INCH OPEN TOP PIPE; THENCE SOUTH 77 DEGREES 35 MINUTES 43 SECONDS WEST A DISTANCE OF 17.35 FEET TO A POINT; NORTH 15 DEGREES 15 MINUTES 37 SECONDS EAST A DISTANCE OF 71.35 FEET TO A POINT; NORTH 17 DEGREES 09 MINUTES 20 SECONDS EAST A DISTANCE OF 68.27 FEET TO A POINT; NORTH 20 DEGREES 20 MINUTES 46 SECONDS EAST A DISTANCE OF 41.83 FEET TO A POINT; THENCE ALONG THE EASTERLY RIGHT OF WAY OF NESBIT FERRY ROAD THE FOLLOWING COURSES AND DISTANCES: NORTH 15 DEGREES 11 MINUTES 12 SECONDS EAST A DISTANCE OF 33.45 FEET TO A POINT; THENCE SOUTH 11 DEGREES 22 MINUTES 52 SECONDS EAST A DISTANCE OF 17.35 FEET TO A POINT; NORTH 17 DEGREES 09 MINUTES 20 SECONDS EAST A DISTANCE OF 68.27 FEET TO A POINT; NORTH 20 DEGREES 20 MINUTES 46 SECONDS EAST A DISTANCE OF 41.83 FEET TO A FOUND 1 INCH OPEN TOP PIPE; THENCE SOUTH 56 DEGREES 00 MINUTES 43 SECONDS WEST A DISTANCE OF 100.10 FEET TO A FOUND 1 INCH OPEN TOP PIPE; THENCE NORTH 52 DEGREES 57 MINUTES 43 SECONDS EAST A DISTANCE OF 109.00 FEET TO A SET 1/2 INCH REBAR WITH CAP; THENCE NORTH 17 DEGREES 17 MINUTES 43 SECONDS EAST A DISTANCE OF 27.70 FEET TO A FOUND 1 INCH OPEN TOP PIPE; THENCE NORTH 32 DEGREES 16 MINUTES 43 SECONDS EAST A DISTANCE OF 125.20 FEET TO A SET 1/2 INCH REBAR WITH CAP ON SAID COMMON LAND LOT LINE BETWEEN LAND LOTS 817 AND 818; THENCE ALONG SAID COMMON LAND LOT LINE BETWEEN LAND LOTS 817 AND 818 THE FOLLOWING COURSES AND DISTANCES: SOUTH 89 DEGREES 01 MINUTES 31 SECONDS EAST A DISTANCE OF 213.96 FEET TO A FOUND 1/2 INCH REBAR, SAID REBAR BEING THE TRUE POINT OF BEGINNING.

TRACT OR PARCEL CONTAINS 4.159 ACRES (181,175 SQUARE FEET).

LEGAL DESCRIPTION – TRACT 4

ALL THAT TRACT OR PARCEL OF LAND LYING AND BEING IN LAND LOT 818 OF THE 1ST DISTRICT, 2ND/SECTION, FULTON COUNTY, GEORGIA, AND BEING MORE PARTICULARLY DESCRIBED AS FOLLOWS:

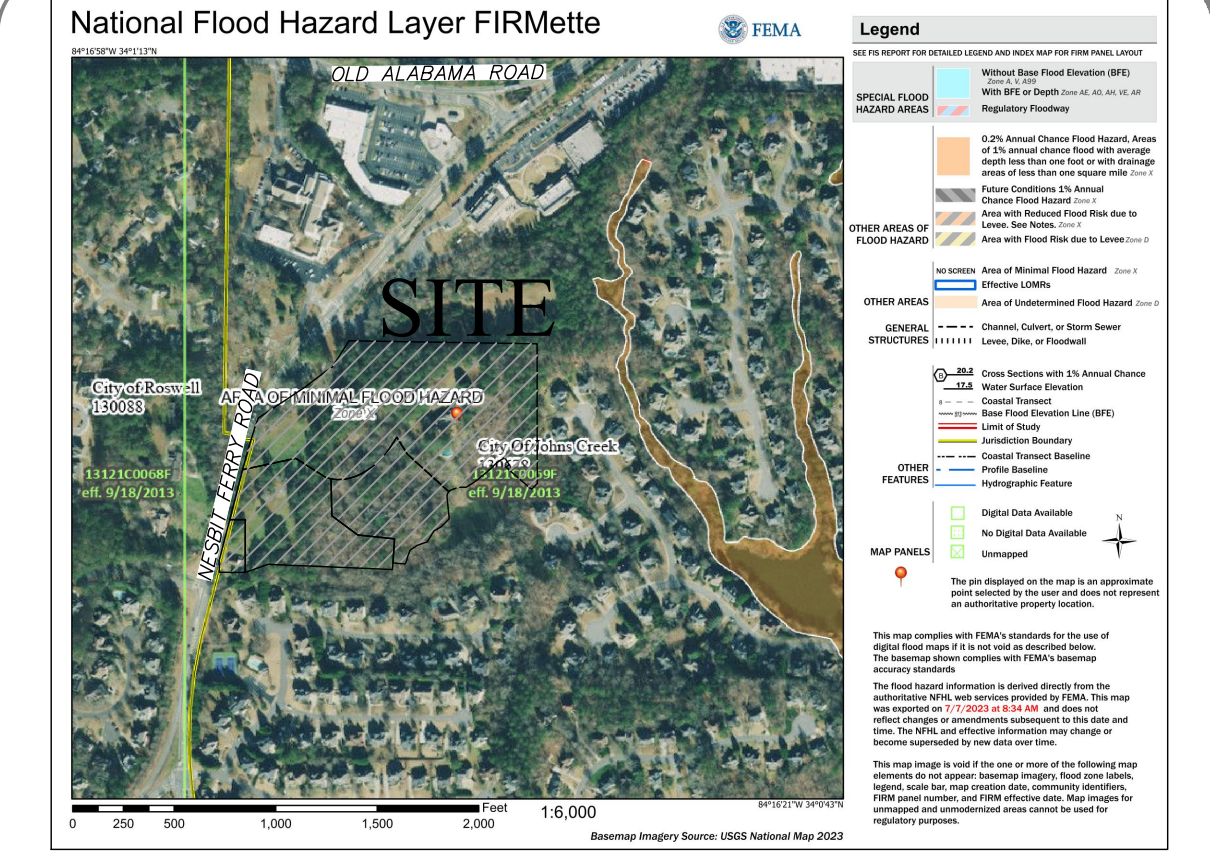
BEGIN AT A SET 1/2 INCH REBAR LOCATED ALONG THE SOUTHEASTERLY RIGHT-OF-WAY (R/W) LINE OF NESBIT FERRY ROAD (60' R/W PUBLIC), HAVING COORDINATES OF NORTH:1460550.69 AND EAST:2262048.93, COORDINATES BASED ON NAD83 STATE PLANE COORDINATE SYSTEM, GEORGIA WEST ZONE, SAID POINT BEING THE TRUE POINT OF BEGINNING, FROM THE TRUE POINT OF BEGINNING AS THUS ESTABLISHED; THENCE NORTH 14 DEGREES 27 MINUTES 13 SECONDS EAST A DISTANCE OF 143.45 FEET TO A FOUND 1-1/4 INCH OPEN TOP PIPE; THENCE NORTH 77 DEGREES 35 MINUTES 43 SECONDS EAST A DISTANCE OF 283.47 FEET TO A SET 1/2 INCH REBAR; THENCE SOUTH 77 DEGREES 35 MINUTES 43 SECONDS WEST A DISTANCE OF 274.35 FEET TO A POINT; THENCE SOUTH 77 DEGREES 35 MINUTES 43 SECONDS WEST A DISTANCE OF 32.85 FEET TO A POINT; THENCE NORTH 49 DEGREES 13 MINUTES 09 SECONDS WEST A DISTANCE OF 136.60 FEET TO A SET 1/2 INCH REBAR WITH CAP; THENCE SOUTH 52 DEGREES 43 MINUTES 43 SECONDS WEST A DISTANCE OF 167.00 FEET TO A POINT; THENCE NORTH 31 DEGREES 16 MINUTES 12 SECONDS WEST A DISTANCE OF 34.00 FEET TO A SET 1/2 INCH REBAR WITH CAP; THENCE SOUTH 58 DEGREES 43 MINUTES 43 SECONDS WEST A DISTANCE OF 37.00 FEET TO A POINT; THENCE SOUTH 45 DEGREES 57 MINUTES 43 SECONDS WEST A DISTANCE OF 47.90 FEET TO A POINT; THENCE SOUTH 43 DEGREES 53 MINUTES 43 SECONDS WEST A DISTANCE OF 38.90 FEET TO A POINT; THENCE SOUTH 48 DEGREES 35 MINUTES 43 SECONDS WEST A DISTANCE OF 15.40 FEET TO A POINT; THENCE SOUTH 24 DEGREES 24 MINUTES 43 SECONDS WEST A DISTANCE OF 31.40 FEET TO A POINT; THENCE SOUTH 58 DEGREES 10 MINUTES 43 SECONDS WEST A DISTANCE OF 28.60 FEET TO A POINT; THENCE NORTH 88 DEGREES 18 MINUTES 17 SECONDS WEST A DISTANCE OF 27.60 FEET TO A POINT; THENCE SOUTH 70 DEGREES 52 MINUTES 43 SECONDS WEST A DISTANCE OF 33.70 FEET TO A POINT; THENCE SOUTH 55 DEGREES 01 MINUTES 43 SECONDS WEST A DISTANCE OF 8.90 FEET TO A POINT; THENCE SOUTH 47 DEGREES 54 MINUTES 30 SECONDS WEST A DISTANCE OF 2.64 FEET TO A FOUND 1 1/4 INCH REBAR; THENCE NORTH 47 DEGREES 56 MINUTES 14 SECONDS WEST A DISTANCE OF 223.12 FEET TO A SET 1/2 INCH REBAR WITH CAP; THENCE NORTH 31 DEGREES 43 MINUTES 12 SECONDS WEST A DISTANCE OF 80.15 FEET TO A FOUND 1 1/4 INCH OPEN TOP PIPE; THENCE SOUTH 33 DEGREES 03 MINUTES 22 SECONDS WEST A DISTANCE OF 55.94 FEET TO A POINT; THENCE NORTH 43 DEGREES 53 MINUTES 43 SECONDS WEST A DISTANCE OF 25.00 FEET TO A POINT; THENCE SOUTH 41 DEGREES 05 MINUTES 43 SECONDS WEST A DISTANCE OF 25.00 FEET TO A POINT; THENCE SOUTH 45 DEGREES 13 MINUTES 43 SECONDS WEST A DISTANCE OF 25.00 FEET TO A POINT; THENCE SOUTH 65 DEGREES 01 MINUTES 43 SECONDS WEST A DISTANCE OF 25.00 FEET TO A POINT; THENCE SOUTH 72 DEGREES 38 MINUTES 43 SECONDS WEST A DISTANCE OF 25.00 FEET TO A POINT; THENCE SOUTH 79 DEGREES 31 MINUTES 43 SECONDS WEST A DISTANCE OF 25.00 FEET TO A POINT; THENCE SOUTH 86 DEGREES 44 MINUTES 43 SECONDS WEST A DISTANCE OF 25.00 FEET TO A POINT; THENCE NORTH 15 DEGREES 15 MINUTES 37 SECONDS EAST A DISTANCE OF 25.25 FEET TO A FOUND 1 1/4 INCH OPEN TOP PIPE; THENCE NORTH 71 DEGREES 23 MINUTES 51 SECONDS WEST A DISTANCE OF 24.79 FEET TO A POINT; THENCE SOUTH 57 DEGREES 32 MINUTES 17 SECONDS WEST A DISTANCE OF 139.60 FEET TO A SET 1/2 INCH REBAR WITH CAP; THENCE SOUTH 77 DEGREES 35 MINUTES 43 SECONDS WEST A DISTANCE OF 73.75 FEET TO A SET 1/2 INCH REBAR; THENCE SOUTH 77 DEGREES 35 MINUTES 43 SECONDS WEST A DISTANCE OF 35.45 FEET TO A FOUND 1 1/4 INCH OPEN TOP PIPE; THENCE SOUTH 77 DEGREES 35 MINUTES 43 SECONDS WEST A DISTANCE OF 17.35 FEET TO A POINT; NORTH 15 DEGREES 15 MINUTES 37 SECONDS EAST A DISTANCE OF 71.35 FEET TO A POINT; NORTH 17 DEGREES 09 MINUTES 20 SECONDS EAST A DISTANCE OF 68.27 FEET TO A POINT; NORTH 20 DEGREES 20 MINUTES 46 SECONDS EAST A DISTANCE OF 41.83 FEET TO A POINT; THENCE ALONG THE EASTERLY RIGHT OF WAY OF NESBIT FERRY ROAD THE FOLLOWING COURSES AND DISTANCES: NORTH 15 DEGREES 11 MINUTES 12 SECONDS EAST A DISTANCE OF 33.45 FEET TO A POINT; THENCE SOUTH 11 DEGREES 22 MINUTES 52 SECONDS EAST A DISTANCE OF 17.35 FEET TO A POINT; NORTH 17 DEGREES 09 MINUTES 20 SECONDS EAST A DISTANCE OF 68.27 FEET TO A POINT; NORTH 20 DEGREES 20 MINUTES 46 SECONDS EAST A DISTANCE OF 41.83 FEET TO A FOUND 1 INCH OPEN TOP PIPE; THENCE SOUTH 56 DEGREES 00 MINUTES 43 SECONDS WEST A DISTANCE OF 100.10 FEET TO A FOUND 1 INCH OPEN TOP PIPE; THENCE NORTH 52 DEGREES 57 MINUTES 43 SECONDS EAST A DISTANCE OF 109.00 FEET TO A SET 1/2 INCH REBAR WITH CAP; THENCE NORTH 17 DEGREES 17 MINUTES 43 SECONDS EAST A DISTANCE OF 27.70 FEET TO A FOUND 1 INCH OPEN TOP PIPE; THENCE NORTH 32 DEGREES 16 MINUTES 43 SECONDS EAST A DISTANCE OF 125.20 FEET TO A SET 1/2 INCH REBAR WITH CAP ON SAID COMMON LAND LOT LINE BETWEEN LAND LOTS 817 AND 818; THENCE ALONG SAID COMMON LAND LOT LINE BETWEEN LAND LOTS 817 AND 818 THE FOLLOWING COURSES AND DISTANCES: SOUTH 89 DEGREES 01 MINUTES 31 SECONDS EAST A DISTANCE OF 213.96 FEET TO A FOUND 1/2 INCH REBAR, SAID REBAR BEING THE TRUE POINT OF BEGINNING.

TRACT OR PARCEL CONTAINS 0.424 ACRES (18,492 SQUARE FEET).

Received March 5, 2024 SUP-24-0001 Planning & Zoning

Parcel Line Table with columns: Line #, Length, Direction. Rows L1 to L20.

Parcel Line Table with columns: Line #, Length, Direction. Rows L21 to L26.



FEMA MAP (NTS)



THE FIELD DATA UPON WHICH THIS PLAT IS BASED WAS COLLECTED USING A TOPCON TOTAL STATION "E5103", "E5105", GEOMAX ZOOM90 ROBOTIC STATION, A GEOMAX ZENUS800 SERIES DATA COLLECTOR, eGPS 20TL GNSS RECEIVER WITH A SITE-LOCALIZED RTK NETWORK, AND HAS A RELATIVE POSITIONAL ACCURACY OF 0.1 FEET.

THIS PLAT HAS BEEN CALCULATED FOR CLOSURE AND WAS FOUND TO BE ACCURATE WITHIN ONE FOOT IN 606,915 FEET.

To Arrowhead: This is to certify that this map or plat and the survey on which it is based were made in accordance with the 2021 Minimum Standard Detail Requirements for ALTA/NSPS Land Title Surveys, jointly established and adopted by ALTA and NSPS, and includes Items 1-4, 8, 9, 10, 13, and 16 of Table A thereof. The field work was completed on: 7/5/2023. Date of Map or Plat: 7/7/2023. Surveyor's Signature: NEY F. AYALA. Printed name: NEY F. AYALA.

PEC+ logo and address: Planners & Engineers Collaborative+, 350 RESEARCH COURT PEACHTREE CORNERS, GEORGIA 30092, (770)451-2741 WWW.PEC.PLUS C.O.A.-LSF000004

REVISIONS table with columns: REV, DATE, DESCRIPTION, BY.

LAND LOT(S) 818 DISTRICT 1ST, 2ND SECTION

ALTA/NSPS LAND TITLE SURVEY FOR ARROWHEAD

SHEET 2 OF 2 DRAWN BY: FA CHECKED BY: JNH FILE NO.: 23037.00 DATE: 07/07/2023 SCALE: 1" = 50' DATE OF FIELD WORK: 7/5/23

REGISTERED SURVEYOR logo for NEY F. AYALA, FULTON COUNTY GEORGIA

Mt. Pisgah United Methodist School Campus

9875 NESBIT FERRY ROAD, JOHNS CREEK, GA 30022

PARCEL 12 304008391576
PARCEL 12 291008170185
PARCEL 12 291008170193
LAND LOTS: 817 & 840

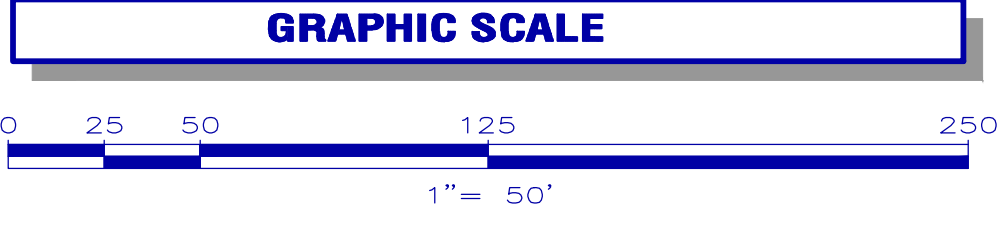
Received
March 5, 2024
SUP-24-0001
Planning & Zoning

LEGEND

STANDARD ABBREVIATIONS	STANDARD SYMBOLS
AC	AIR CONDITIONER
BH	BORE HOLE
CI	CORRUGATED METAL PIPE
CMF	CONCRETE MONUMENT FND
CO	SANITARY CLEANOUT
CPED	COMMUNICATION FEDESTAL
CTP	CRIMPED TOP PIPE
DIP	DRAIN INLET
DIP	DUCTILE IRON PIPE
DWCB	DOUBLE WING CATCH BASIN
FNC	FENCE
FND	FOUND
GM	GAS METER
INV	INVERT
JB	JUNCTION BOX
MH	MANHOLE
OMP	OVERHEAD POWER
OTIP	OPEN TOP PIPE
PM	POWER METER
POB	POINT OF BEGINNING
POC	POINT OF COMMENCING
RCP	REINFORCED CONCRETE PIPE
RS	IRON REINFORCING BAR
RS	5/8"RRR SET
RS	SANITARY SEWER
SWCB	SINGLE WING CATCH BASIN
TRANS	ELECTRIC TRANSFORMER
X 000.00	SPOT ELEVATION
—	POWER POLE
—	GUY WIRE
—	POWER LINE
—	LIGHT POLE
—	ELECTRIC TRANSFORMER
—	WATER VAULT
—	UNDERGROUND GAS LINE
—	GAS VALVE
—	GAS METER
—	WATER VALVE
—	WATER METER
—	FIRE HYDRANT
—	UNDERGROUND ELECTRIC LINE
—	UNDERGROUND GAS LINE
—	UNDERGROUND COMMUNICATION LINE
—	UNDERGROUND WATER LINE
—	PHOTO POSITION INDICATOR
—	TREE POSITION INDICATOR

IF YOU DIG

Know what's below.
Call before you dig.
Dial 811
Or Call 800-282-7411



PROPERTY DESCRIPTION

All that tract or parcel of land lying and being in Land Lots 817 & 840, 1ST District, 2ND Section, City of Johns Creek, Fulton County, and being more particularly described as follows:

BEGINNING at a 5/8-inch rebar set at the intersection of the Land Lot Line common to land lots 817 and 818 with the southeastern right-of-way of Nesbit Ferry Road (variable right-of-way); Thence along said right-of-way the following sixteen (16) courses: North 41 degrees 22 minutes 46 seconds East a distance of 30.15 feet to a 5/8-inch rebar set; North 51 degrees 44 minutes 27 seconds East a distance of 69.50 feet to a 5/8-inch rebar set; North 41 degrees 22 minutes 46 seconds East a distance of 26.96 feet to a 5/8-inch rebar set; North 84 degrees 40 minutes 14 seconds East a distance of 18.15 feet to a 5/8-inch rebar set; North 40 degrees 24 minutes 43 seconds East a distance of 69.01 feet to a 5/8-inch rebar set; North 06 degrees 28 minutes 43 seconds West a distance of 29.28 feet to a 5/8-inch rebar set; North 40 degrees 12 minutes 19 seconds East a distance of 100.00 feet to a 5/8-inch rebar set; North 47 degrees 07 minutes 19 seconds East a distance of 204.90 feet to a 5/8-inch rebar set; North 41 degrees 28 minutes 34 seconds East a distance of 295.86 feet to a 5/8-inch rebar set; North 41 degrees 28 minutes 55 seconds East a distance of 157.93 feet to a 5/8-inch rebar set; along a curve to the right on an arc length of 89.46 feet, said curve having a radius of 1650.00 feet with a chord distance of 89.46 feet, of North 43 degrees 12 minutes 08 seconds East, to a 5/8-inch rebar set; North 52 degrees 41 minutes 02 seconds East a distance of 46.85 feet to a 5/8-inch rebar set; North 47 degrees 07 minutes 52 seconds East a distance of 53.59 feet to a 5/8-inch rebar set; North 52 degrees 10 minutes 19 seconds East a distance of 84.64 feet to a 5/8-inch rebar set; North 37 degrees 57 minutes 00 seconds West a distance of 7.62 feet to a 5/8-inch rebar set; North 53 degrees 05 minutes 29 seconds East a distance of 218.01 feet to a 5/8-inch rebar set; North 53 degrees 20 minutes 30 seconds East a distance of 232.25 feet to a 5/8-inch rebar set; North 56 degrees 44 minutes 03 seconds East a distance of 104.58 feet to a 5/8-inch rebar set; North 64 degrees 15 minutes 46 seconds East a distance of 34.79 feet to a 5/8-inch rebar set; North 53 degrees 37 minutes 47 seconds East a distance of 165.90 feet to a 5/8-inch rebar set at the division line between Bayview Loan Servicing, LLC (Deed Book 48618, Page 74) and Mt. Pisgah United Methodist Church, Inc. (Deed Book 48490, Page 537); Thence along said division line along a division line, South 43 degrees 00 minutes 05 seconds East a distance of 52.54 feet to a point; South 17 degrees 23 minutes 55 seconds West a distance of 67.34 feet to a point; South 23 degrees 23 minutes 55 seconds West a distance of 14.73 feet to a point; South 17 degrees 23 minutes 55 seconds West a distance of 15.51 feet to a point; South 24 degrees 34 minutes 28 seconds West a distance of 65.25 feet to a point; South 31 degrees 31 minutes 54 seconds West a distance of 46.47 feet to a point; South 56 degrees 35 minutes 29 seconds West a distance of 28.77 feet to a point; South 15 degrees 12 minutes 57 seconds West a distance of 30.98 feet to a point; South 20 degrees 56 minutes 33 seconds West a distance of 13.15 feet to a point; South 23 degrees 01 minutes 50 seconds West a distance of 23.78 feet to a point; South 30 degrees 24 minutes 08 seconds West a distance of 45.84 feet to a point; South 68 degrees 06 minutes 08 seconds West a distance of 34.11 feet to a point; South 39 degrees 28 minutes 40 seconds West a distance of 43.05 feet to a point; South 47 degrees 45 minutes 40 seconds West a distance of 28.99 feet to a point; South 56 degrees 27 minutes 48 seconds West a distance of 33.42 feet to a point; South 56 degrees 16 minutes 17 seconds East a distance of 17.19 feet to a point; South 13 degrees 04 minutes 36 seconds West a distance of 44.46 feet to a point; South 27 degrees 43 minutes 10 seconds West a distance of 79.97 feet to a point; North 88 degrees 10 minutes 50 seconds West a distance of 15.33 feet to a point; South 15 degrees 12 minutes 57 seconds West a distance of 46.03 feet to a point; South 35 degrees 18 minutes 31 seconds West a distance of 60.82 feet to a point; South 16 degrees 18 minutes 12 seconds East a distance of 50.98 feet to a point; North 74 degrees 19 minutes 12 seconds West a distance of 22.03 feet to a point; South 65 degrees 32 minutes 46 seconds West a distance of 12.53 feet to a point; South 38 degrees 12 minutes 57 seconds West a distance of 22.45 feet to a point; South 16 degrees 27 minutes 19 seconds West a distance of 52.53 feet to a point; South 13 degrees 35 minutes 21 seconds East a distance of 52.04 feet to a point; South 87 degrees 26 minutes 11 seconds East a distance of 23.61 feet to a point; South 101 degrees 11 minutes 57 seconds East a distance of 82.61 feet to a point; South 66 degrees 16 minutes 02 seconds East a distance of 27.75 feet to a point; South 07 degrees 03 minutes 15 seconds West a distance of 12.66 feet to a point; South 35 degrees 12 minutes 57 seconds West a distance of 64.79 feet to a point; South 18 degrees 05 minutes 03 seconds East a distance of 14.71 feet to a point; South 02 degrees 13 minutes 03 seconds East a distance of 34.21 feet to a point; South 20 degrees 13 minutes 44 seconds West a distance of 12.11 feet to a point; South 35 degrees 18 minutes 18 seconds West a distance of 23.04 feet to a point; South 33 degrees 58 minutes 12 seconds West a distance of 11.85 feet to a point; South 29 degrees 57 minutes 51 seconds West a distance of 28.89 feet to a point; South 07 degrees 03 minutes 15 seconds West a distance of 80.35 feet to a point; South 49 degrees 39 minutes 21 seconds East a distance of 21.67 feet to a point; South 49 degrees 10 minutes 47 seconds West a distance of 1.83 feet to a point; Thence leaving said centerline of creek, along the division line between Mt. Pisgah United Methodist Church, Inc. (Deed Book 48490, Page 537) and lots 829 & 830 of Chartwell Subdivision (Plat Book 118, Page 28) the following two (2) courses: North 89 degrees 19 minutes 38 seconds West a distance of 267.75 feet to a 1/2-inch rebar set; North 89 degrees 20 minutes 59 seconds West a distance of 106.77 feet to a 1/2-inch rebar set; Thence along the division line between Mt. Pisgah United Methodist Church, Inc. (Deed Book 48490, Page 537) and Helga G. Moore (Deed Book 5278, Page 207) (Deed Book 6289, Page 331) the following two (2) courses: North 89 degrees 58 seconds East a distance of 214.02 feet to a 1-1/4-inch open top pipe found; North 89 degrees 05 seconds East a distance of 538.31 feet to a 1/2-inch rebar set; Thence North 89 degrees 06 minutes 42 seconds West a distance of 166.65 feet to a 5/8-inch rebar set at the intersection of the Land Lot Line common to land lots 817 and 818 with the southeastern right-of-way of Nesbit Ferry Road; said 5/8-inch rebar set being the TRUE POINT OF BEGINNING.

Said tract of land contains 24.436 Acres.

DRAINAGE NOTE

The owner of record on behalf of himself (itself) and all successors in interest specifically releases the City of Johns Creek from any and all liability and responsibility for flooding or erosion from storm drains or from flooding from high water of natural creeks, rivers, drainage features. A drainage easement is hereby established for the sole purpose of providing for the emergency protection of the free flow of surface waters along all watercourses as established by these Regulations and the Director of the Department of Public Works. Said Director may conduct emergency maintenance operations within this easement where emergency conditions exist. Emergency maintenance shall be the removal of trees and other debris, excavation, filling and the like, necessary to remedy a condition, which in the judgment of staff and Director, is potentially injurious to life, property, or the public road or utility system. Such emergency maintenance conducted for the common good shall not be construed as constituting a continuing maintenance obligation on the part of the City of Johns Creek or any abrogation of the City of Johns Creek's right to seek reimbursement for expenses from the owner(s) of the property (ies) or the lands that generated the conditions.

FULTON COUNTY DEPARTMENT OF PUBLIC WORKS

I CERTIFY THAT THIS DEVELOPMENT HAS COMPLIED WITH THE APPLICABLE POTABLE WATER REQUIREMENTS AND SANITARY SEWER REQUIREMENTS OF THE CITY OF JOHNS CREEK, GA. ANY REVISIONS TO THIS DOCUMENT AFTER THE DATE BELOW THAT MAY AFFECT THE WATER AND SEWER SYSTEMS PRESENTED HEREON SHALL VOID THIS APPROVAL.

APPROVED THIS _____ DAY OF _____, 2018.

SIGNATURE _____ PRINTED NAME AND TITLE _____

PLAT STATEMENT

The purpose of this plat is to combine parcels 12 304008391576; 12 291008170185 and 12 291008170193 into one contiguous parcel

PLAT APPROVAL

The Director of the Community Development Department of The City of Johns Creek, Georgia, certifies that this plat complies with the City of Johns Creek Zoning Ordinances, Conditions of Zoning, and the City of Johns Creek Development Regulations as amended.

Director _____ Date _____
Department of Community Development

OWNER'S ACKNOWLEDGEMENT

OWNER'S ACKNOWLEDGEMENT:
STATE OF GEORGIA
(CITY OF JOHNS CREEK)

The owner of the land shown on this plat and whose name is subscribed thereto, and in person or through a duly authorized agent, acknowledges that this plat was made from an actual survey and dedicates to the use of the public forever, all streets, parks, drains, easements and public grounds thereon shown, which comprise a total of acres, for the purposes therein expressed. The entire ownership of the subdivided property is included within this plat.

Total Sanitary Sewer Easement=68,858+12,337+10,003=91,198 SF (2.09 Acres)
Additional Construction Easement=14,569 SF (0.33 Acres)
Total Water Easement=0.01 Acres

Printed Name of Owner of Record _____ Signature of Owner of Record _____

SURVEYOR CERTIFICATION

As required by subsection (a) of O.C.G.A. Section 15-6-67, this plat has been prepared by a land surveyor and approved by all applicable local jurisdictions for recording as evidenced by approval certificates, signatures, stamps, or statements hereon. Such approvals or affirmations should be confirmed with the appropriate governmental bodies by any purchaser or user of this plat as to intended use of any parcel. Furthermore, the undersigned land surveyor certifies that this plat complies with the minimum technical standards for property surveys in Georgia as set forth in the rules and regulations of the Georgia Board of Registration for Professional Engineers and Land Surveyors and as set forth in O.C.G.A. Section 15-6-67.

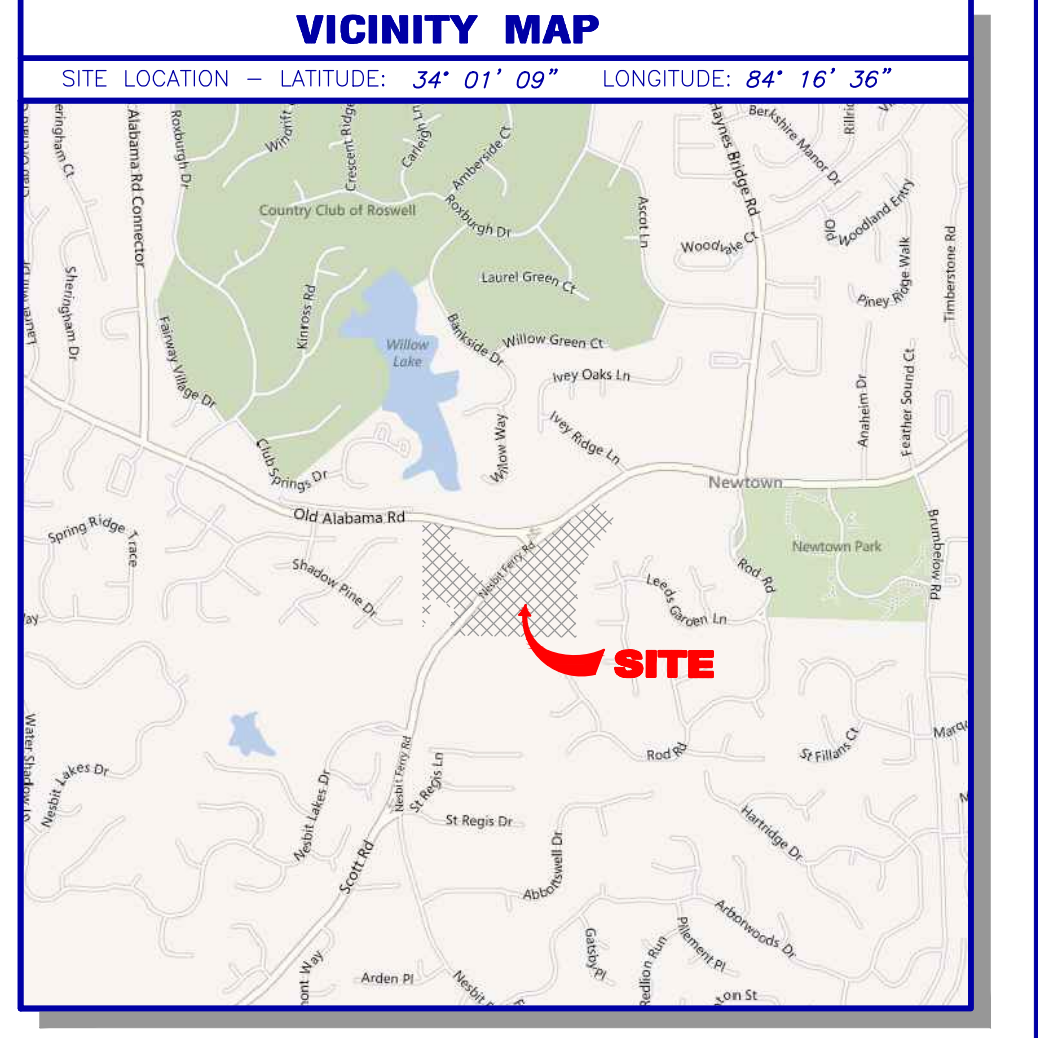
David L. Hester
Georgia Registered
Land Surveyor # 3042



Land Surveying & Mapping
1660 Barnes Mill Road
Marietta, Georgia 30062
Phone: (770) 795-9900
Fax: (770) 795-8880
www.geosurvey.com
info@geosurvey.com
Certificate of Authorization# LS000621

LINE TABLE

LINE	BEARING	DISTANCE
L1	S47°03'27"W	67.34
L2	S23°23'55"E	14.73
L3	S17°22'24"W	13.51
L4	S24°34'28"W	65.25
L5	S31°54'41"W	46.47
L6	S56°35'29"W	26.77
L7	S19°32'58"W	30.98
L8	S70°56'33"W	13.15
L9	S23°01'50"W	23.78
L10	S30°24'09"W	46.84
L11	S68°06'08"W	34.11
L12	S39°29'57"W	43.05
L13	S47°45'40"W	28.99
L14	S60°27'48"W	33.42
L15	S56°56'17"E	17.19
L16	S13°04'36"W	44.46
L17	S27°43'10"W	79.97
L18	N88°10'50"W	18.33
L19	S13°12'57"W	46.03
L20	S35°16'31"W	60.82
L21	S12°16'56"W	50.98
L22	S27°43'10"W	22.03
L23	S65°32'46"W	12.53
L24	S38°12'18"E	22.45
L25	S16°27'19"W	57.33
L26	S13°35'21"E	52.04
L27	S68°06'08"W	23.61
L28	S10°11'57"E	82.61
L29	S66°16'02"E	27.75
L30	S07°03'13"W	12.66
L31	S35°15'30"W	64.79
L32	S19°03'27"W	14.71
L33	S02°03'07"W	34.21
L34	S20°13'35"W	39.54
L35	S41°41'01"E	70.85
L36	S12°32'44"W	12.11
L37	S35°18'18"W	23.04
L38	S33°58'12"W	11.85
L39	S29°57'51"E	28.89
L40	S07°43'07"W	80.35
L41	S49°39'21"W	21.67
L42	S22°10'40"W	1.83



GENERAL NOTES

THIS SURVEY HAS BEEN PREPARED FOR THE EXCLUSIVE USE OF THE PERSON OR ENTITIES NAMED HEREON. NO EXPRESS OR IMPLIED WARRANTIES WITH RESPECT TO THE INFORMATION SHOWN HEREON IS TO BE EXTENDED TO ANY PERSONS OR ENTITIES OTHER THAN THOSE SHOWN HEREON.

PORTIONS OF THIS PROPERTY ARE LOCATED IN A FLOOD HAZARD AREA (ZONE "X" SHADED) BASED ON THE FLOOD INSURANCE RATE MAP FOR THIS AREA. AREAS OF 500-YEAR FLOOD OR AREAS OF 100-YEAR FLOOD WITH DEPTHS OF LESS THAN 1 FOOT. THE MAP NUMBER FOR THIS AREA IS 13121C0069F, AND THE DATE OF SAID MAP IS SEPTEMBER 18, 2013. THIS DETERMINATION WAS MADE BY GRAPHICALLY DETERMINING THE POSITION OF THIS SITE ON SAID FIRM MAPS UNLESS OTHERWISE NOTED.

THE DATUM FOR THIS SITE WAS ESTABLISHED UTILIZING GLOBAL POSITIONING SYSTEMS, AND BASED ON POSITIONAL VALUES FOR THE VIRTUAL REFERENCE STATION NETWORK DEVELOPED BY eGPS SOLUTIONS. THE HORIZONTAL REFERENCE FRAME IS NORTH AMERICAN DATUM OF 1983 (NAD83)-STATE PLANE COORDINATE SYSTEM OF GEORGIA-WEST ZONE. THE VERTICAL REFERENCE FRAME IS NORTH AMERICAN VERTICAL DATUM OF 1988. ANY DIRECTIONS OR DIMENSIONS SHOWN ARE A RECTANGULAR, GROUND LEVEL PROJECTION OF THE STATE PLANE COORDINATE SYSTEM.

THE SITE IS ZONED "AG-1" (AGRICULTURAL DISTRICT). THE MINIMUM YARD SETBACKS ARE: FRONT - 60 FEET; SIDE - 25 FEET FOR INTERIOR LINE AND 40 FEET WHEN ADJACENT TO A STREET; AND REAR - 50 FEET.

PLEASE NOTE: ZONING AND SETBACKS SHOULD BE CONFIRMED AND VERIFIED BY PLANNING AND ZONING PRIOR TO DESIGN OR CONSTRUCTION ACTIVITIES. PLEASE NOTE: ABOVE GROUND UTILITIES ARE SHOWN HEREON. NO UNDERGROUND UTILITIES WERE MARKED OR LOCATED.

PLEASE NOTE: GEOSURVEY, LTD., ASSUMES NO LIABILITY REGARDING THE LOCATION OR EXISTENCE OF WETLANDS. NO WETLANDS WERE FLAGGED OR LOCATED AT THE DATE SHOWN THIS SURVEY.

CITY OF JOHNS CREEK AND FULTON COUNTY PERSONNEL AND/OR AGENTS SHALL HAVE FREE AND TOTAL ACCESS TO AND ACROSS ALL EASEMENTS.

REFERENCE

1-3 EXEMPTION PLAT FOR OLD ALABAMA SQUARE AS PREPARED FOR PIEDMONT OLD ALABAMA PARTNERS, L.P., DATED OCTOBER 18, 2000, LAST REVISED JUNE 28, 2001. PREPARED BY POST, BUCKLEY, SCHUH & JERRIGAN, INC.

2- SUBDIVISION PLAT FOR WOODFALLS SUBDIVISION AS RECORDED IN PLAT BOOK 118, PAGE 85 AND PREPARED FOR GLENRIDGE PROPERTIES, INC.

3- BOUNDARY SURVEY OF MT. PISGAH UNITED METHODIST CHURCH FOR MT. PISGAH UNITED METHODIST CHURCH, INC. DATED SEPTEMBER 13, 2000, AS PREPARED BY SURVEY SERVICES

4- FINAL PLAT FOR CHARTWELL UNIT V DATED SEPTEMBER 11, 1997, AS PREPARED BY TRAVIS PRUITT & ASSOCIATES, P.C. AND RECORDED IN PLAT BOOK 198, PAGE 28.

5- BOUNDARY SURVEY OF THE NEW SCHOOL SITE FOR MT. PISGAH UNITED METHODIST CHURCH, INC. DATED SEPTEMBER 13, 2000, AS PREPARED BY SURVEY SERVICES

CLOSURE STATEMENT

THE FIELD CLOSURE UPON WHICH THIS PLAT IS BASED HAS A CLOSURE PRECISION OF ONE FOOT IN 27,745. AND WAS ADJUSTED USING THE LEAST SQUARES METHOD. A TOPCON 8005 ROBOTIC TOTAL STATION AND TDS RANGER DATA COLLECTOR WERE USED TO COLLECT THIS FIELD DATA.

THIS PLAT HAS BEEN CALCULATED FOR CLOSURE AND WAS FOUND TO BE ACCURATE WITHIN ONE FOOT IN 405,228 FEET. D.L.H. INT.

SUP12-002

COMBINATION PLAT

Mt. Pisgah United Methodist School Campus

9875 NESBIT FERRY ROAD, JOHNS CREEK, GA 30022
FOR

Mt. Pisgah United Methodist Church, Inc.

GS JOB NO:	20124283	DRAWING SCALE:	1" = 50'	SURVEY DATE:	June 12, 2017
FIELD WORK:	SC	CITY:	JOHNS CREEK	STATE:	GEORGIA
PROJ MGR:	DLH	COUNTY:	FULTON	No.:	Date
REVIEWED:	JRC	LAND LOT:	817 & 840	Description:	
DWG FILE:	20124283.dwg	DISTRICT:	1st	SECTION:	2nd

Page
1 of 3

RESERVED FOR CLERK OF COURTS RECORDING INFORMATION

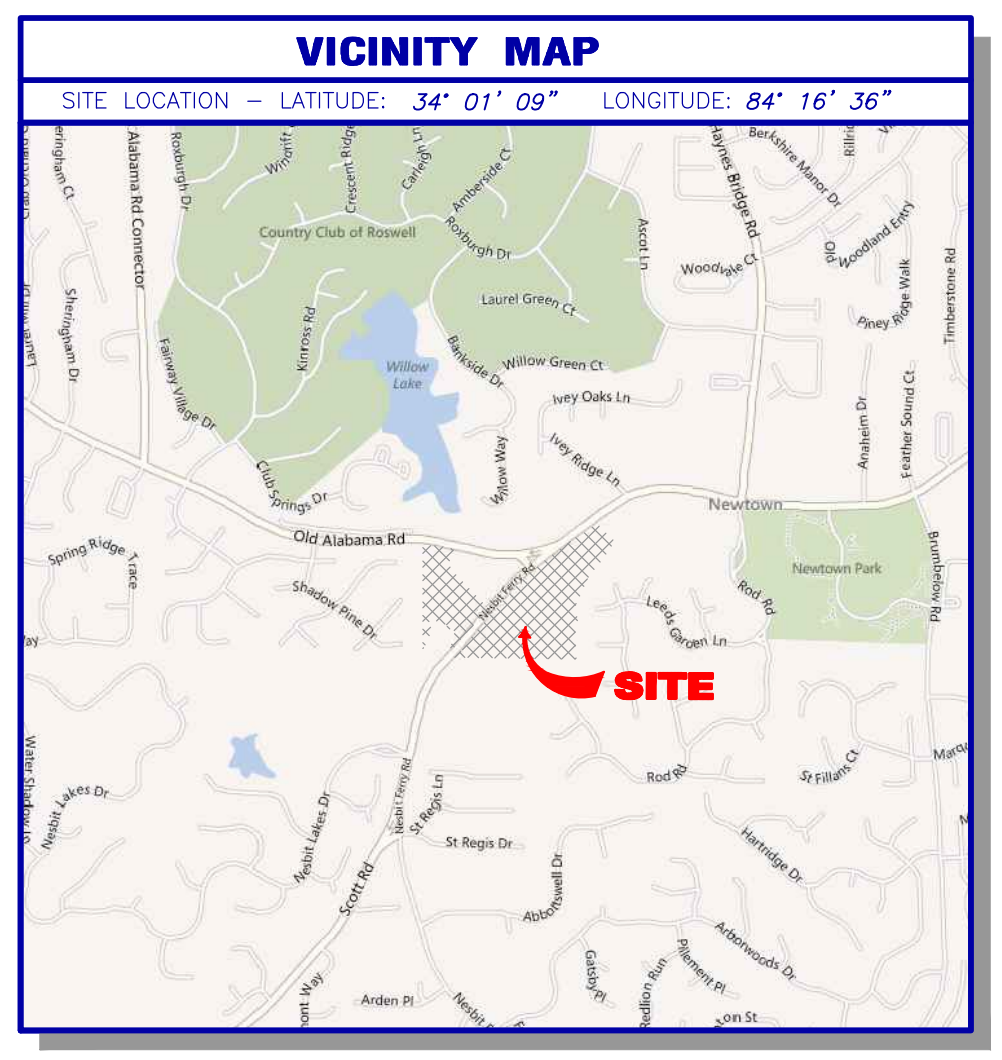
LEGEND

STANDARD ABBREVIATIONS	STANDARD SYMBOLS
AC	AIR CONDITIONER
BH	BORE HOLE
CI	CURE INLET
CMF	CORRUGATED METAL PIPE
CO	CONCRETE MONUMENT FND
CPED	SANITARY CLEANOUT
CTP	COMMUNICATION FEDESTAL
CTP	CRIMPED TOP PIPE
DI	DIP
DIP	DUCTILE IRON PIPE
DWCB	DOUBLE WING CATCH BASIN
FNC	FENCE
FND	FOUND
GM	GAS METER
INV	INVERT
JB	JUNCTION BOX
MH	MANHOLE
OHP	OVERHEAD POWER
OHP	OPEN TOP PIPE
PM	POWER METER
POB	POINT OF BEGINNING
POC	POINT OF COMMENCING
RCP	REINFORCED CONCRETE PIPE
RBR	IRON REINFORCING BAR
RBS	5/8" RBR SET
SS	SANITARY SEWER
SWCB	SINGLE WING CATCH BASIN
TRANS	ELECTRIC TRANSFORMER
X 000.00	SPOT ELEVATION
—	POWER POLE
—	GUY WIRE
—	POWER LINE
—	LIGHT POLE
—	ELECTRIC TRANSFORMER
—	WATER VAULT
—	GAS VALVE
—	GAS METER
—	WATER VALVE
—	WATER METER
—	FIRE HYDRANT
—	UNDERGROUND ELECTRIC LINE
—	UNDERGROUND GAS LINE
—	UNDERGROUND COMMUNICATION LINE
—	UNDERGROUND WATER LINE
—	PHOTO POSITION INDICATOR
—	TREE POSITION INDICATOR

Mt. Pisgah United Methodist School Campus
 9875 NESBIT FERRY ROAD, JOHNS CREEK, GA 30022
 PARCEL 12 304008391576
 PARCEL 12 291008170185
 PARCEL 12 291008170193
 LAND LOTS: 817 & 840

Received
 March 5, 2024
 SUP-24-0001
 Planning & Zoning

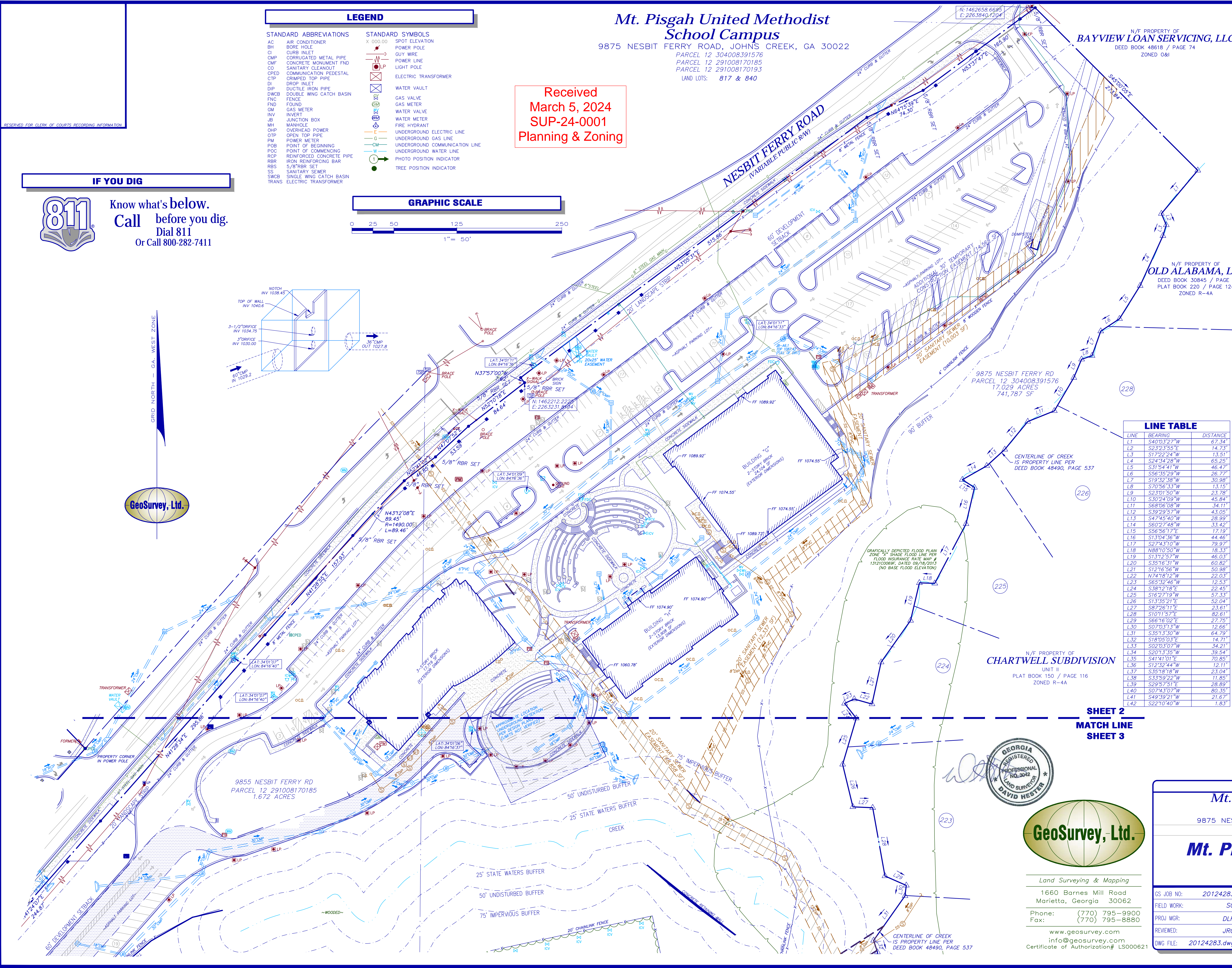
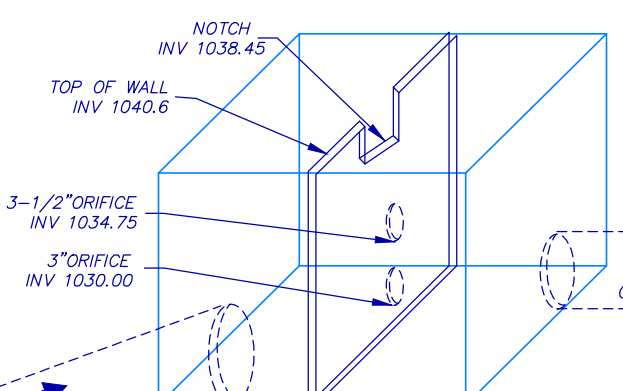
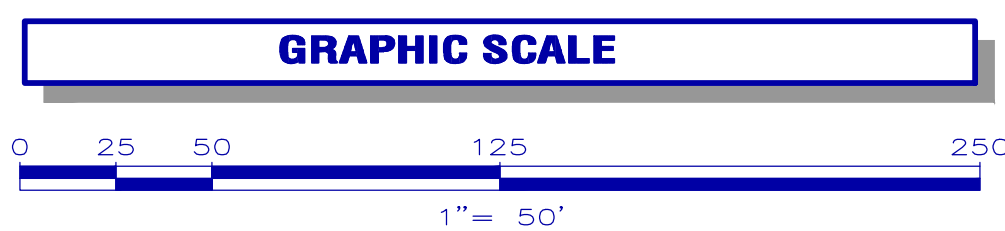
N/F PROPERTY OF
BAYVIEW LOAN SERVICING, LLC
 DEED BOOK 48618 / PAGE 74
 ZONED O&I



IF YOU DIG



Know what's below.
 Call before you dig.
 Dial 811
 Or Call 800-282-7411



LINE TABLE

LINE	BEARING	DISTANCE
L1	S40°32'27"W	67.34'
L2	S23°23'55"E	14.73'
L3	S17°22'24"W	13.51'
L4	S24°34'28"W	65.25'
L5	S31°54'41"W	46.47'
L6	S56°35'29"W	26.77'
L7	S19°32'38"W	30.98'
L8	S70°56'33"W	13.15'
L9	S23°01'50"W	23.78'
L10	S30°24'09"W	45.84'
L11	S68°06'08"W	34.11'
L12	S39°29'57"W	43.05'
L13	S47°45'40"W	28.99'
L14	S60°27'48"W	33.42'
L15	S56°56'17"E	17.19'
L16	S13°04'36"W	44.46'
L17	S27°43'10"W	79.97'
L18	N88°10'50"W	18.33'
L19	S13°12'57"W	46.03'
L20	S35°16'31"W	60.82'
L21	S12°16'56"W	50.98'
L22	N74°18'12"W	22.03'
L23	S65°32'46"W	12.53'
L24	S38°12'18"E	22.45'
L25	S16°27'19"W	57.33'
L26	S13°56'21"E	52.04'
L27	S87°26'11"E	23.61'
L28	S10°11'57"E	82.61'
L29	S66°16'02"E	27.75'
L30	S07°03'37"W	12.66'
L31	S35°19'00"W	64.79'
L32	S18°05'03"E	14.71'
L33	S02°03'07"W	34.21'
L34	S20°13'35"W	39.54'
L35	S41°41'07"E	70.85'
L36	S12°23'44"W	12.11'
L37	S35°18'18"W	23.04'
L38	S33°59'22"W	11.85'
L39	S29°57'51"E	28.89'
L40	S07°43'07"W	80.35'
L41	S40°39'21"W	21.67'
L42	S22°10'40"W	1.83'

GENERAL NOTES

THIS SURVEY HAS BEEN PREPARED FOR THE EXCLUSIVE USE OF THE PERSON OR ENTITIES NAMED HEREON. NO EXPRESS OR IMPLIED WARRANTIES WITH RESPECT TO THE INFORMATION SHOWN HEREON IS TO BE EXTENDED TO ANY PERSONS OR ENTITIES OTHER THAN THOSE SHOWN HEREON.

THIS SURVEY HAS BEEN PREPARED WITHOUT THE BENEFIT OF A CURRENT TITLE INSPECTION REPORT. EASEMENTS OR OTHER ENCUMBRANCES MAY EXIST ON PUBLIC RECORD BUT NOT BE SHOWN HEREON.

PORTIONS OF THIS PROPERTY ARE LOCATED IN A FLOOD HAZARD AREA (ZONE "X" SHADDED) BASED ON THE FLOOD INSURANCE RATE MAP FOR THIS AREA. AREAS OF 500-YEAR FLOOD OR AREAS OF 100-YEAR FLOOD WITH DEPTHS OF LESS THAN 1 FOOT. THE MAP NUMBER FOR THIS AREA IS 13121C0069P, AND THE DATE OF SAID MAP IS SEPTEMBER 18, 2013. THIS DETERMINATION WAS MADE BY GRAPHICALLY DETERMINING THE POSITION OF THIS SITE ON SAID FIRM MAPS UNLESS OTHERWISE NOTED.

THE DATUM FOR THIS SITE WAS ESTABLISHED UTILIZING GLOBAL POSITIONING SYSTEMS, AND BASED ON POSITIONAL VALUES FOR THE VERTICAL REFERENCE STATION NETWORK DEVELOPED BY eGPS SOLUTIONS. THE HORIZONTAL REFERENCE FRAME IS NORTH AMERICAN DATUM OF 1983 (NAD83) - STATE PLANE COORDINATE SYSTEM OF GEORGIA - WEST ZONE. THE VERTICAL REFERENCE FRAME IS NORTH AMERICAN VERTICAL DATUM OF 1988. ANY DIRECTIONS OR DIMENSIONS SHOWN ARE A RECTANGULAR, GROUND LEVEL PROJECTION OF THE STATE PLANE COORDINATE SYSTEM.

THE SITE IS ZONED "AG-1" (AGRICULTURAL DISTRICT). THE MINIMUM YARD SETBACKS ARE: FRONT - 60 FEET, SIDE - 25 FEET FOR INTERIOR LINE AND 40 FEET WHEN ADJACENT TO A STREET, AND REAR - 50 FEET.

PLEASE NOTE: ZONING AND SETBACKS SHOULD BE CONFIRMED AND VERIFIED BY PLANNING AND ZONING PRIOR TO DESIGN OR CONSTRUCTION ACTIVITIES.

PLEASE NOTE: ABOVE GROUND UTILITIES ARE SHOWN HEREON. NO UNDERGROUND UTILITIES WERE MARKED OR LOCATED.

PLEASE NOTE: GEOSURVEY, LTD., ASSUMES NO LIABILITY REGARDING THE LOCATION OR EXISTENCE OF WETLANDS. NO WETLANDS WERE FLAGGED OR LOCATED AT THE DATE SHOWN THIS SURVEY.

CITY OF JOHNS CREEK AND FULTON COUNTY PERSONNEL AND/OR AGENTS SHALL HAVE FREE AND TOTAL ACCESS TO AND ACROSS ALL EASEMENTS.

SURVEY REFERENCES

- EXEMPTION PLAT FOR OLD ALABAMA SQUARE AS PREPARED FOR PIEMONT OLD ALABAMA PARTNERS, L.P., DATED OCTOBER 18, 2000, LATEST REVISED JUNE 28, 2001. PREPARED BY POST, BUCKLEY, SCHUH & JERRIGAN, INC.
- SUBDIVISION PLAT FOR WOODFALLS SUBDIVISION AS RECORDED IN PLAT BOOK 118, PAGE 85 AND PREPARED FOR GLENRIDGE PROPERTIES, INC.
- BOUNDARY SURVEY OF MT. PISGAH UNITED METHODIST CHURCH FOR MT. PISGAH UNITED METHODIST CHURCH, INC., DATED SEPTEMBER 13, 2000, AS PREPARED BY SURVEY SERVICES
- FINAL PLAT FOR CHARTWELL UNIT V DATED SEPTEMBER 11, 1997, AS PREPARED BY TRAVIS PRUITT & ASSOCIATES, P.C. AND RECORDED IN PLAT BOOK 198, PAGE 28.
- BOUNDARY SURVEY OF THE NEW SCHOOL SITE FOR MT. PISGAH UNITED METHODIST CHURCH, INC., DATED SEPTEMBER 13, 2000, AS PREPARED BY SURVEY SERVICES

CLOSURE STATEMENT

THE FIELD CLOSURE UPON WHICH THIS PLAT IS BASED HAS A CLOSURE PRECISION OF ONE FOOT IN 527,745. AND WAS ADJUSTED USING THE LEAST SQUARES METHOD. A TOPCON BOTS ROBOTIC TOTAL STATION AND TDS RANGER DATA COLLECTOR WERE USED TO COLLECT THIS FIELD DATA.

THIS PLAT HAS BEEN CALCULATED FOR CLOSURE AND WAS FOUND TO BE ACCURATE WITHIN ONE FOOT IN 405,228 FEET. D.L.H. INT.

N/F PROPERTY OF
CHARTWELL SUBDIVISION
 UNIT II
 PLAT BOOK 150 / PAGE 116
 ZONED R-4A



Land Surveying & Mapping
 1660 Barnes Mill Road
 Marietta, Georgia 30062
 Phone: (770) 795-9900
 Fax: (770) 795-8880
 www.geosurvey.com
 info@geosurvey.com
 Certificate of Authorization# LS000621

SHEET 2
MATCH LINE
SHEET 3

Page
2
of
3

SUP12-002

COMBINATION PLAT
Mt. Pisgah United Methodist School Campus
 9875 NESBIT FERRY ROAD, JOHNS CREEK, GA 30022
 FOR
Mt. Pisgah United Methodist Church, Inc.

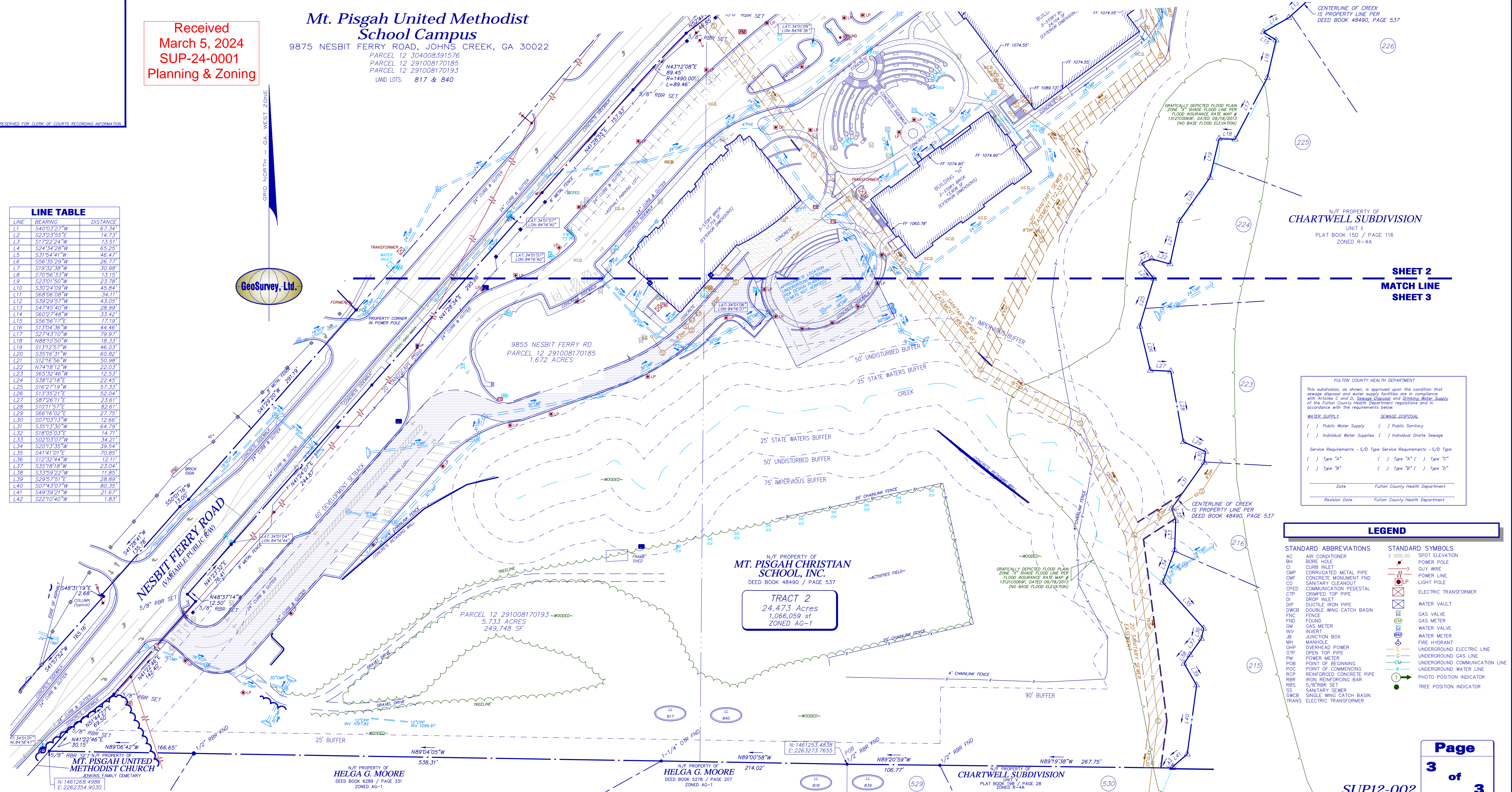
GS JOB NO:	20124283	DRAWING SCALE:	1" = 50'	SURVEY DATE:	June 12, 2017
FIELD WORK:	SC	CITY:	JOHNS CREEK STATE:	GEORGIA	REVISIONS
PROJ MGR:	DLH	COUNTY:	FULTON	No. Date	Description
REVIEWED:	JRC	LAND LOT:	817 & 840		
DWG FILE:	20124283.dwg	DISTRICT:	1st SECTION:	2nd	

Received
March 5, 2024
SUP-24-0001
Planning & Zoning

**Mt. Pisgah United Methodist
School Campus**
9875 NESBIT FERRY ROAD, JOHNS CREEK, GA 30022
PARCEL 12 304008391576
PARCEL 12 291008170185
PARCEL 12 291008170193
LAND LOTS: 817 & 840

RESERVED FOR CLERK OF COURTS RECORDING INFORMATION

LINE	BEARING	DISTANCE
L1	S40°03'27"W	67.34'
L2	S23°33'55"E	14.73'
L3	S17°22'24"W	13.51'
L4	S24°34'28"W	65.25'
L5	S31°54'41"W	46.47'
L6	S56°35'29"W	26.77'
L7	S19°32'38"W	30.98'
L8	S70°56'33"W	13.15'
L9	S23°01'50"W	23.78'
L10	S30°24'09"W	45.84'
L11	S68°06'08"W	34.11'
L12	S39°29'57"W	43.05'
L13	S47°45'40"W	28.99'
L14	S60°27'48"W	33.42'
L15	S56°56'17"E	17.19'
L16	S13°04'36"W	44.46'
L17	S27°43'10"W	79.97'
L18	N88°10'50"W	18.33'
L19	S13°12'57"W	46.03'
L20	S35°16'31"W	60.82'
L21	S12°16'56"W	50.98'
L22	N74°18'12"W	22.03'
L23	S35°32'48"W	12.53'
L24	S38°12'18"E	22.45'
L25	S16°27'19"W	57.33'
L26	S13°35'21"E	52.04'
L27	S67°26'11"E	23.61'
L28	S10°11'57"E	82.67'
L29	S66°16'02"E	27.75'
L30	S07°03'13"W	12.66'
L31	S35°13'30"W	64.79'
L32	S18°05'03"E	14.71'
L33	S02°03'07"W	34.21'
L34	S20°13'35"W	39.54'
L35	S41°41'01"E	70.85'
L36	S12°32'44"W	12.11'
L37	S35°18'18"W	23.04'
L38	S33°59'22"W	11.85'
L39	S29°57'51"E	28.89'
L40	S07°43'07"W	80.35'
L41	S49°39'21"W	21.67'
L42	S22°10'40"W	1.83'



N/E PROPERTY OF
CHARTWELL SUBDIVISION
UNIT 11
PLAT BOOK 150 / PAGE 116
ZONED R-4A

SHEET 2
MATCH LINE
SHEET 3

FULTON COUNTY HEALTH DEPARTMENT
This subdivision, as shown, is approved upon the condition that sewage disposal and water supply facilities are in compliance with Articles C and D, Sewage, Disposal, and Drinking Water, Supply of the Fulton County Health Department, regulations and in accordance with the requirements below:
WATER SUPPLY **SEWAGE DISPOSAL**
() Public Water Supply () Public Sanitary
() Individual Water Supplies () Individual Onsite Sewage
Service Requirements - S/D Type Service Requirements - S/D Type
() Type "A" () Type "A" () Type "C"
() Type "B" () Type "B" () Type "D"
Date Fulton County Health Department
Revision Date Fulton County Health Department

STANDARD ABBREVIATIONS	STANDARD SYMBOLS		
AC	AIR CONDITIONER	X 000.00	SPOT ELEVATION
BH	BORE HOLE	—	POWER POLE
CI	CURB INLET	—	GUY WIRE
CMF	CORRUGATED METAL PIPE	—	POWER LINE
CP	CONCRETE MONUMENT FND	—	LIGHT POLE
CO	SANITARY CLEANOUT	—	ELECTRIC TRANSFORMER
CPED	COMMUNICATION PEDESTAL	—	WATER VAULT
CTP	CRUMPLED TOP PIPE	—	GAS VALVE
DI	DIP	—	GAS METER
DIP	DUCTILE IRON PIPE	—	WATER VALVE
DWCB	DOUBLE WING CATCH BASIN	—	FIRE HYDRANT
FNC	FENCE	—	UNDERGROUND ELECTRIC LINE
FND	FOUND	—	UNDERGROUND GAS LINE
GM	GAS METER	—	UNDERGROUND COMMUNICATION LINE
INV	INVERT	—	UNDERGROUND WATER LINE
JBI	JUNCTION BOX	—	PHOTO POSITION INDICATOR
MH	MANHOLE	—	TREE POSITION INDICATOR
OHP	OVERHEAD POWER	—	
OTF	OPEN TOP PIPE	—	
PM	POWER METER	—	
POB	POINT OF BEGINNING	—	
POC	POINT OF COMMENCING	—	
RCP	REINFORCED CONCRETE PIPE	—	
RBR	IRON REINFORCING BAR	—	
RBS	5/8" RBR SET	—	
SS	SANITARY SEWER	—	
SWCB	SINGLE WING CATCH BASIN	—	
TRANS	ELECTRIC TRANSFORMER	—	

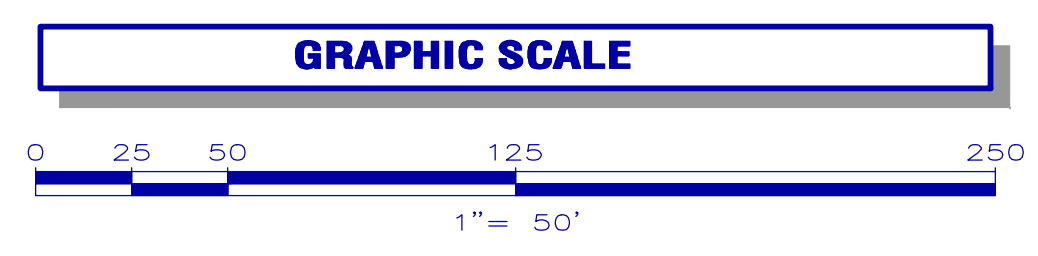
SUP12-002

Page
3
of
3

IF YOU DIG



Know what's below.
Call before you dig.
Dial 811
Or Call 800-282-7411



CLOSURE STATEMENT
THE FIELD CLOSURE UPON WHICH THIS PLAT IS BASED HAS A CLOSURE PRECISION OF ONE FOOT IN 52,745. AND WAS ADJUSTED USING THE LEAST SQUARES METHOD. A TOPCON 8005 ROBOTIC TOTAL STATION AND TDS RANGER DATA COLLECTOR WERE USED TO COLLECT THIS FIELD DATA.
THIS PLAT HAS BEEN CALCULATED FOR CLOSURE AND WAS FOUND TO BE ACCURATE WITHIN ONE FOOT IN 505,223 FEET. DLJLL, INT.

Page
2
of
2



Land Surveying & Mapping
1660 Barnes Mill Road
Marietta, Georgia 30062
Phone: (770) 795-9900
Fax: (770) 795-8880
www.geosurvey.com
info@geosurvey.com
Certificate of Authorization# LS000621

COMBINATION PLAT
**Mt. Pisgah United Methodist
School Campus**
9875 NESBIT FERRY ROAD, JOHNS CREEK, GA 30022
FOR
**Mt. Pisgah United Methodist
Church, Inc.**

GS JOB NO: 20124283	DRAWING SCALE: 1" = 50'	SURVEY DATE: June 12, 2017
FIELD WORK: SC	CITY: JOHNS CREEK STATE: GEORGIA	REVISIONS
PROJ MGR: DLH	COUNTY: FULTON	No. Date Description
REVIEWED: JRC	LAND LOT: 817 & 840	
DWG FILE: 20124283.dwg	DISTRICT: 1st SECTION: 2nd	