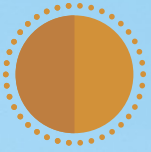




City of Johns Creek
Green Guide



The City of Johns Creek continues examining current policies and practices for ways to become more sustainable, prioritizing and protecting our natural amenities, and taking actions today for the next generation of Johns Creek residents.



Sustainability is meeting the needs of residents and businesses today while planning for the needs of tomorrow and future generations. It is a conscious choice and practice that aims to decrease environmental impact, preserve the natural environment, and question the status quo.

In Johns Creek, this means creating an environment that residents and businesses thrive in today while ensuring preservation of the spaces, places, and qualities that are cherished about Johns Creek remain for the residents of tomorrow and future generations to enjoy.

The Green Guide provides an overview of the City of Johns Creek's sustainable practices that support our Green Community certification, administered by the Atlanta Regional Commission.

Contents

Recycling & Waste Reduction	3
Land Use	5
Trees & Greenspace	5
Energy Efficiency	7
Water	8
Green Building & Development	9
Transportation & Air Quality	11
Education & Outreach	13
Innovation & Unique to The Creek	14



Recycling & Waste Reduction

Traditional Recycling at City Facilities

Did you know that the City provides recycling at each of its facilities? City Hall, our four Fire Stations, and the Parks all have opportunities to recycle. The program accepts traditional recycling items like paper, aluminum, and plastics. The City goes the extra mile to provide plastic bottle and can recycling at special events. Look for the green bins next time you are at a City event.

Residential Curbside Recycling

Although the City does not provide direct curbside recycling, the City requires all registered haulers to offer weekly curbside service through the Solid Waste ordinance. Contact your hauler to inquire about recycling options.

Commercial Recycling

Although the City does not provide direct commercial recycling, the City requires all registered haulers to offer weekly commercial service to businesses through the Solid Waste ordinance. Contact your hauler to inquire about recycling options.



Fun Fact: About 80% of what Americans throw in the trash is recyclable.

Recycling Awareness Program

The City educates its residents about recycling services and opportunities from recycling events to programs that residents can access through private companies or other means.

The “Going Green” program works to highlight and spread awareness for the City’s sustainability efforts through the City’s website, social media, and outreach events. Visit the Sustainability Center on the City website for a list of recycling resources.

Glass Recycling

The City has a permanent glass recycling container that residents can use at Ocee Park. All colors of glass are accepted. Types of glass accepted include clean food and beverage containers or jars. The glass is taken to a processing facility where it is sorted and grinded into cullet, which can then be used to make new glass products.



The City recycled more than 86,000 pounds of glass in the first six months of the program.

Bulky Recycling Day

The City holds an annual Bulky Recycling Event at City Hall in partnership with Keep North Fulton Beautiful. Each year, tens of thousands of pounds of bulky items are recycled, refurbished, or donated. Accepted items include: large appliances, electronics, home medical equipment, furniture, metal items such as grills and lawn furniture, bicycles, lawn mowers, and more. Residents must pre-register for the event through the City website.

Household Hazardous Waste Disposal

The City holds an annual Household Hazardous Waste Recycling Event in partnership with Keep North Fulton Beautiful (KNFB).

The event attracts hundreds of residents each year and tens of thousands of pounds of dangerous chemicals that are disposed of properly. Items collected include: mercury items, pool chemicals, herbicides, pesticides, acids, corrosives, gasoline, automotive fluids, oil and latex-based paint, aerosols, fire extinguishers, propane tanks, etc. See the KNFB website for the full list of accepted items and the City’s calendar for the next event.



Land Use

City Hall

Did you know that City Hall is located on a former greyfield? A greyfield, an underutilized real estate or commercial property, earns its name from the huge concrete or asphalt parking lots that accompany these developments.

The former office building was vacant for almost a decade before the City renovated it in 2018. The building is now home to all City departments, including Johns Creek Fire and Police Headquarters, Municipal Court, Public Works, and more.



This former greyfield was strategically chosen for City Hall's new location because it was in the center of an old office park envisioned to become the Johns Creek Town Center. The City's public investment in the area sparked private investment to follow and begin to redevelop the surrounding areas.

Trees & Greenspace

Parking Lot Canopy Standards

The City's Zoning ordinance has requirements for the frequency, spacing, and type of tree plantings in parking lot areas. These tree planting requirements, based on the City's calculations of tree maturation and anticipated growth, will result in approximately 50 percent canopy coverage of parking spaces within 15 years of a project completion.

Greenspace Connectivity

The 2016 Recreation and Parks Master Plan laid the plan for acquiring and protecting more greenspace in the City of Johns Creek. Since the adoption of the plan, the City has more than doubled its park acreage with the acquisition of 203 acres, which is Cauley Creek Park. The park's entire southern border is the Chattahoochee River, which will connect the existing national recreation areas along the river.

The plan addressed the gaps in service identified through surveys and utilized unique techniques to both improve access and increase connectivity. The City created "pocket parks," which utilized smaller pieces of land from right-of-way acquisitions to create accessible greenspaces and the construction of sidewalks in surrounding areas.



Protected Greenspace

Sixteen percent of all land in Johns Creek is protected public greenspace. This includes our parks, Chattahoochee National Recreation Areas, and other parcels of protected land, which includes schools, Autrey Mill Nature Preserve, and others.

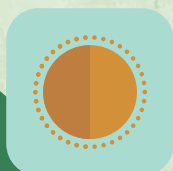
Farmers Markets

The Medlock Farmers Market is an important space for residents to have access to fresh and healthy foods. The farmers market was established the Johns Creek Chamber in conjunction with WePartner LLC, and the City helped by establishing its location and expediting permits.

Newtown Community Garden

Interested in having your own gardening space? Located near Park Place Active Adult Center, the Community Garden is operated and maintained by the Johns Creek Garden Association.

Each year, residents can apply for one of the 41 plots in the garden, ideal for flowers, vegetables, fruit, and herbs. Registration opens in the early spring. View the Johns Creek Garden Association website for more details on how to request a plot.



Energy Efficiency

LED Lights in Facilities & Traffic Signals

The City prioritizes the use and installment of LED bulbs. Both City Hall and Fire Station 64 are entirely LED facilities. In 2018, the City utilized a Community Development Block Grant to retrofit all traffic signal lights to LED lightbulbs. For nearly 75 signalized intersections within the City and several 24/7 City facilities, the conversion to LED saves the City thousands of dollars each year in energy costs.

Lights-Off, Power-Down Policy

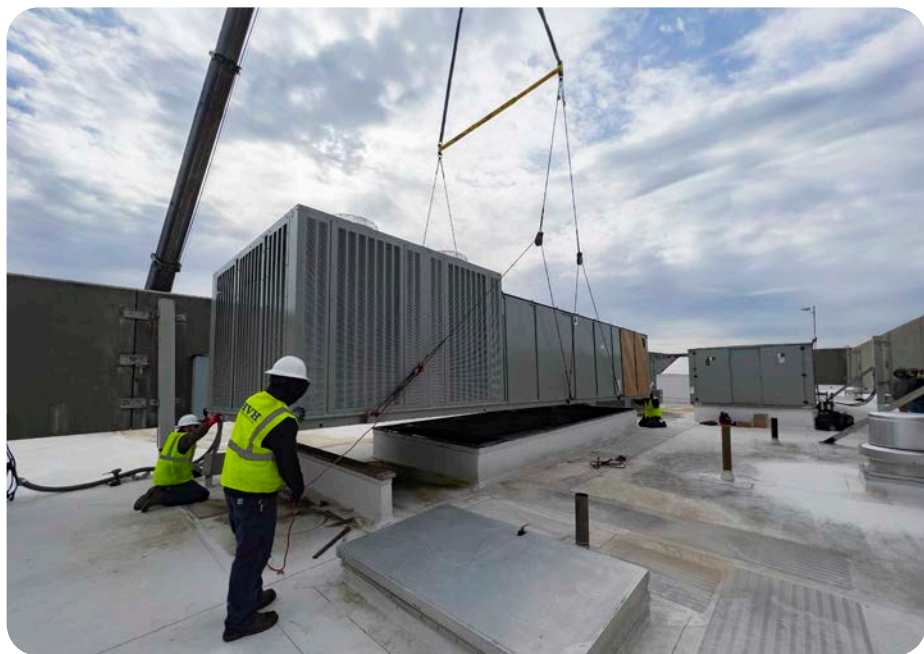
The City instituted a lights-off, power-down policy for staff to reduce unnecessary energy usage in City Hall. All lights are on motion-sensor timers and will turn off after the work day has concluded. Staff also turn off non-essential equipment at the completion of the work day.

Outdoor Lighting Efficiency

Upon incorporation, the City adopted a “Night Sky Ordinance” which regulates the usage of outdoor lighting. Restrictions on direction and strength of lighting help reduce light pollution and protect local wildlife.

Cool Roof

The City Hall has a cool roof, which is engineered to deflect heat, and helps lower energy costs for cooling the building during hot months. The roof was installed as part of the 2018 building retrofit of City Hall.



LED Lights can last up to 25 times longer than traditional incandescent lightbulbs and only need 25 percent of the energy!

Water Quality



Local Water Education Program

Through public participation and outreach efforts, the City engages and educates residents about water supply, conservation issues, and stormwater management.

In partnership with Autrey Mill Nature Preserve, the City supports the Adopt-A-Stream program and various stream clean ups throughout the year, where residents can participate and learn about water quality testing.

The City's Stormwater Division operates a booth at City events, where staff members are available to answer questions and distribute educational materials.

Staff utilizes social media and the City website to provide educational content for residents. Check out the City's social media and website for more information about water quality, conservation, and management.

Green Infrastructure

Green infrastructure is becoming an integral part of City infrastructure.



One example is the Rain Garden located at Morton Road Park. Rain gardens are a stormwater management technique that allow for water to collect during storms and slowly release afterward. Rain gardens come in all different shapes, sizes, and types – the Morton Road Rain Garden looks like a bed of plants. See if you can spot it next time you are at the park.



Rainwater Reuse & Irrigation for City Facilities

City Hall is adjacent to Creekside Park, a stormwater detention pond that collects rainwater for the surrounding office park. The City and over 50 surrounding properties utilize water from the South Pond to irrigate landscaping on their facilities as opposed to potable (drinking) water.

Green Building & Development

Green Building Incentives

Outlined in the Town Center Zoning Code, all development projects requesting rezoning must complete sustainability efforts that equate to points, much like the Green Communities Certification. An example includes building a LEED-certified building.

Smart Growth Incentives

Smart Growth principles are a set of 10 priorities that communities are encouraged to consider when exploring development and redevelopment of their jurisdictions. The Town Center Vision and Master Plan aligns with five of the Smart Growth Principles, including mixed land uses, compact design, creating a sense of place, preserving open space, and encouraging stakeholder and community collaboration.

The City's Town Center Vision and Master Plan was acknowledged by the Atlanta Regional Commissions, "Livable Centers Initiative" or LCI Program. The grant program supports local governments in re-imagining communities as vibrant, walkable places that offer diverse mobility options, encourage healthy lifestyles and provide improved access to jobs and services.



The Johns Creek Town Center Vision & Master Plan aligns with these Smart Growth principles:

- 1. Mixed Land Uses**
- 2. Compact Design**
- 3. Sense of Place**
- 4. Preserve Open Space**
- 5. Encourage Community / Stakeholder Collaboration**





Revitalization Strategies

The City's Economic Development team utilizes revitalization strategies that help encourage redevelopment or repurposing of existing land, buildings, and other spaces. Staff provides maps of major redevelopment areas available throughout the City and a map of Town Center to interested developers or businesses.

Business Sustainability Outreach

The City's Economic Development Team has a robust business engagement strategy that covers a variety of topics and forums, including sustainability. An example is the annual Green Workshop, hosted in partnership with the Johns Creek Chamber of Commerce, where information is provided to businesses about how local, regional, and state green resources can benefit small businesses.

Transportation & Air Quality

No-Idling Policy for City Vehicles

The City adopted a no idling policy to prevent City vehicles from idling unnecessarily, requiring employees to turn off vehicles while parked. Public safety vehicles are exempt from this policy.

Traffic Signal Synchronization

In 2019, the City hired a Traffic Signals Engineer to help alleviate traffic congestion. The engineer completed a city-wide analysis and made strategic adjustments to signal timing at intersections all over the City.

The synchronization adjustments have significantly decreased amount spent in traffic, which reduces air pollution from vehicles and less fuel consumption during idling. Traffic signal timing is actively monitored and adjusted through the City's state-of-the-art Traffic Control Center.



Safe Routes to School

The City has a Safe Routes (SRTS) to School Plan, which documents Johns Creek's efforts to support implementation of the SRTS Program at local schools, following the six Es: Education, Encouragement, Engineering, Enforcement, Evaluation, and Equity.

Specifically, the City provides police presence at all Walk to School events, and at arrival and dismissal of schools each day, and provides pedestrian and bicycle safety content through the City's social media and website. Check with your school to see if they are a participant.



Employee Commute Options

The City has several alternative commuting options encouraging the reduction of air pollution including participation in the Georgia Commute Options Program, telework opportunities, preferred carpool parking, and bike facilities at City Hall.



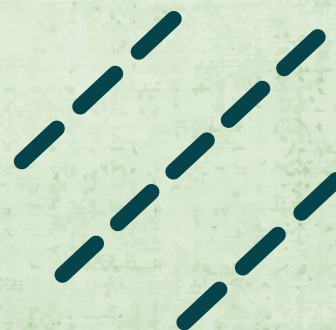
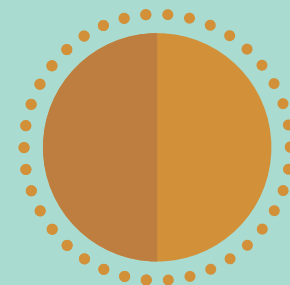
The City of Johns Creek has developed one of the most advanced Intelligent Traffic Systems (ITS) in the country. ITS ties 72 traffic signals in five separately coordinated systems, which are each uniquely timed, to a Traffic Control Center (TCC) at City Hall.

Bicycle & Pedestrian Friendly Policies

Johns Creek's Transportation Master Plan and the North Fulton Comprehensive Transportation Plan identify multi-modal transportation and connectivity as a top priority. From pinpointing and completing trail and pedestrian connectivity infrastructure to more recently identifying bicycle corridors and passing a PTV ordinance, the City of Johns Creek is working to make the City a biking and pedestrian friendly place.

End-of-Trip Bike Facilities

The City requires all appropriate facilities to have bike racks installed to encourage bike riding to and from City Facilities. This includes City Hall and City Parks – look for the bike racks next time you visit your favorite park!



Education & Outreach

Partnership with Autrey Mill Nature Preserve Evergreen Schools Programming & Other Programming

The City has a long-standing partnership with Autrey Mill Nature Preserve (AMNP), as they are a unique blend of a City park and nature preserve, with programming facilitated by the AMNP Association. Through the City's financial support each year, Autrey Mill is able to provide free or reduced cost programming to interested K-12 schools both onsite and to external venues.

Autrey Mill's mission of educating the public on the importance of appreciating, protecting, and preserving the local nature habitat is demonstrated through their ongoing community education efforts and events, like booth presences at City events, stream clean-ups, and more.



Autrey Mill Nature Preserve is located on 46 acres of ravine forest, and has over three miles of scenic walking trails winding past a creek, rocky shoals, wildflowers, a variety of native Georgia plants and animal life.



Innovation & Unique to the Creek

Water Fountain Retrofits: Bottle Fillers

Nine bottle filling stations are installed throughout our parks, City Hall is the latest location to incorporate the attachments which help decrease the purchase and consumption of plastic water bottles and encourages reusable bottle use.

Each month, the parks' stations save an average of 10,000 plastic bottles from use.

Hefty ReNew Partnership: Recycling Hard-to-Recycle Plastics

The City has become a partner in the Hefty ReNew Program, which provides a meaningful and accessible way for people to recycle single-use and hard-to-recycle plastics that would otherwise go to landfill. The program also supports the growth of the post-consumer plastic product market.

To participate, residents can purchase Hefty ReNew orange bags at local retailers like Kroger or Target, fill the bags with plastics like grocery bags, shampoo bottles, styrofoam, and more, then drop off the bags for recycling. Visit the City website for more information.

Paperless

The City conducts most business paperless since the introduction of the Customer Self Service Portal (CSS), where residents can apply for permits, licenses, submit plans, and more.

System innovations like the CSS Portal have helped the City save over 4,000 trees worth of paper per year.



