

Received
August 6, 2024
SUP-24-0003,
SUP-24-0004,
VC-24-0005
Planning & Zoning



CRESCENT VIEW ENGINEERING, LLC

211 Frasier Street SE
Marietta, GA 30060
Phone: 678-324-8410
peng@crescentvieweng.com

August 01, 2024

Messiah Lutheran Church
4765 Kimball Bridge Road
Johns Creek, GA 30005

RE: Trip Generation Letter for the Proposed Messiah Lutheran Church Expansion at
4765 Kimball Bridge Road, Johns Creek, GA 30005

Dear Sir/Madam,

This letter provides trip generation information prepared by Crescent View Engineering, LLC (CVE) for the proposed Messiah Lutheran Church Expansion. The church expansion includes three phases. The first two phases take over existing Church interior space and convert it to Pre-K classroom floor area with a total capacity of 60 Children. The third phase of future construction is to expand the church offices and fellowship area to replenish the Church spaces that the PreK occupies. This should not trigger further trips because the sanctuary is still the prominent and governing space that determines the occupancy and number of parking spaces required. The trip generation is estimated based on the full built condition (Phase 1,2+3). See Figure 1 for church expansion details.

Trip Generation

The full-built scenario of Phase 1,2, and 3 church expansion will provide the same church sanctuary area as the existing condition but with an additional daycare facility onsite. Therefore, the additional trips will be generated fully from the onsite daycare facility.

Average weekday daily, AM peak hour, and PM peak hour trips for the proposed onsite daycare facility were estimated using the ITE Trip Generation Manual, 11th Edition, and general assumptions based on anticipated land use. Trips associated with the daycare facility were calculated utilizing the ITE Land Use Code 565, Day Care Center. The trips associated with this land use would include the 60 children at full capacity. Refer to Table 1 thru 4 for a summary of the trip generation volumes for the site.

Figure 1 – Church Expansion Plan

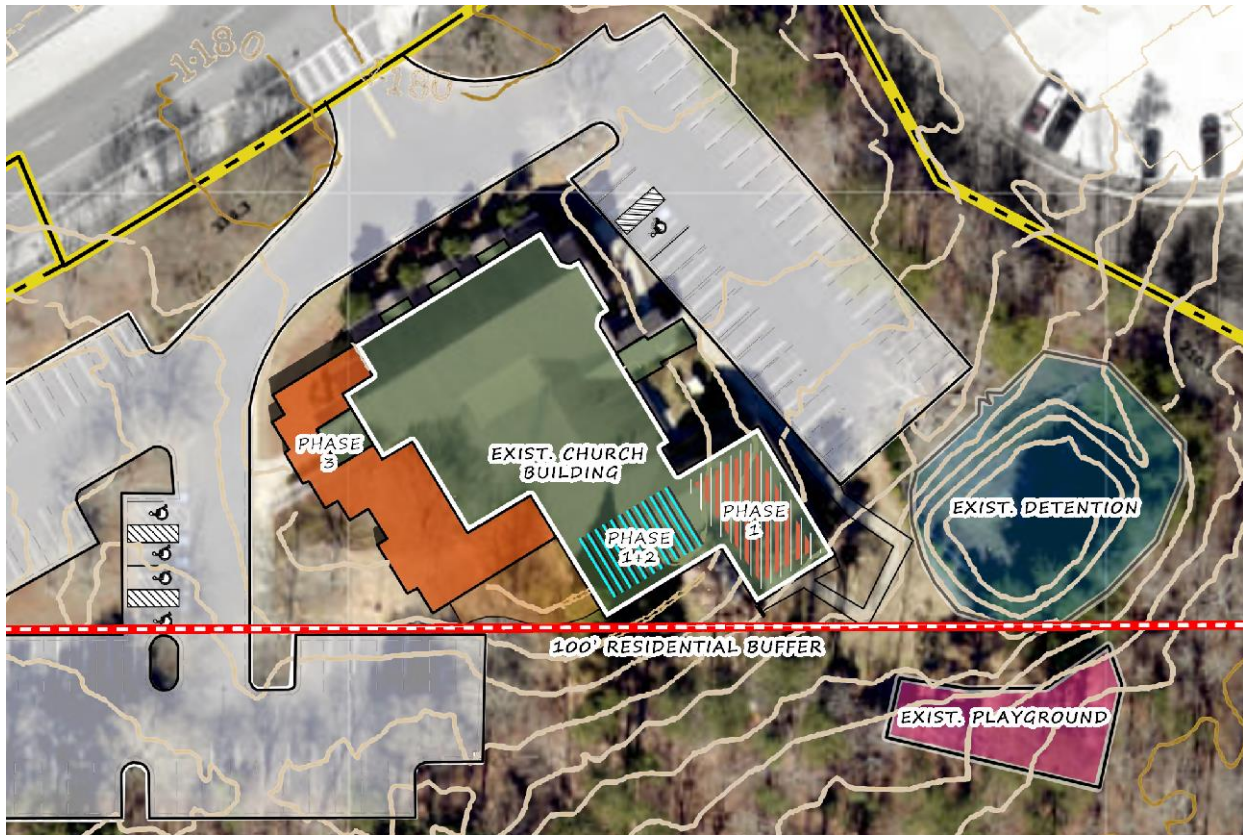


Table 1 thru 4: Site Trip Generation Summary

Development Description	TP Code	Independent Variables	Units	Average Vehicle Trip Ends (Weekday)				
				Rate	Directional Distribution		AVTE Entering	AVTE Exiting
					Entering	Exiting		
Day Care Center	565	# Children	60.00	4.09	50%	50%	123	123
Total Net Trip Generation							123	123

Development Description	TP Code	Independent Variables	Units	Average Vehicle Trip Ends (AM Peak Hourly)				
				Rate	Directional Distribution		AVTE Entering	AVTE Exiting
					Entering	Exiting		
Day Care Center	565	# Children	60.00	0.78	53%	47%	25	22
Total Net Trip Generation							25	22

Development Description	TP Code	Independent Variables	Units	Average Vehicle Trip Ends (PM Peak Hourly)				
				Rate	Directional Distribution		AVTE Entering	AVTE Exiting
					Entering	Exiting		
Day Care Center	565	# Children	60.00	0.79	47%	53%	22	25
Total Net Trip Generation							22	25

Land Use (ITE Code)	Variable	Daily Traffic (vpd)	AM Peak Hour Trips (vph)		PM Peak Hour Trips (vph)	
			Enter	Exit	Enter	Exit
Day Care Center (565)	60 Children	246	25	22	22	25
Total Trips		246	47		47	

As shown in the above table, it is estimated that the proposed church expansion will generate 246 total trips during a typical 24-hour weekday period. Of the daily traffic volume, it is anticipated that 47 total trips (25 entering and 22 exiting) will occur during the weekday AM peak hour and 47 total trips (22 entering and 25 exiting) will occur during the weekday PM peak hour, both of which are less than 100 trips during the peak hour threshold. Therefore, a traffic impact study is not warranted as per City of Johns Creek requirements.

If you have any questions, please contact us by email or phone.

Sincerely,
Crescent View Engineering, LLC



Peng Zhang, P.E. PTOE
CEO/Managing Partner



PTOE # 3425