



Received
 November 5, 2024
 RZ-24-0011 & VC-24-0008
 Planning & Zoning

① SCHEMATIC SITE PLAN
 1" = 30'-0"

GENERAL NOTES:

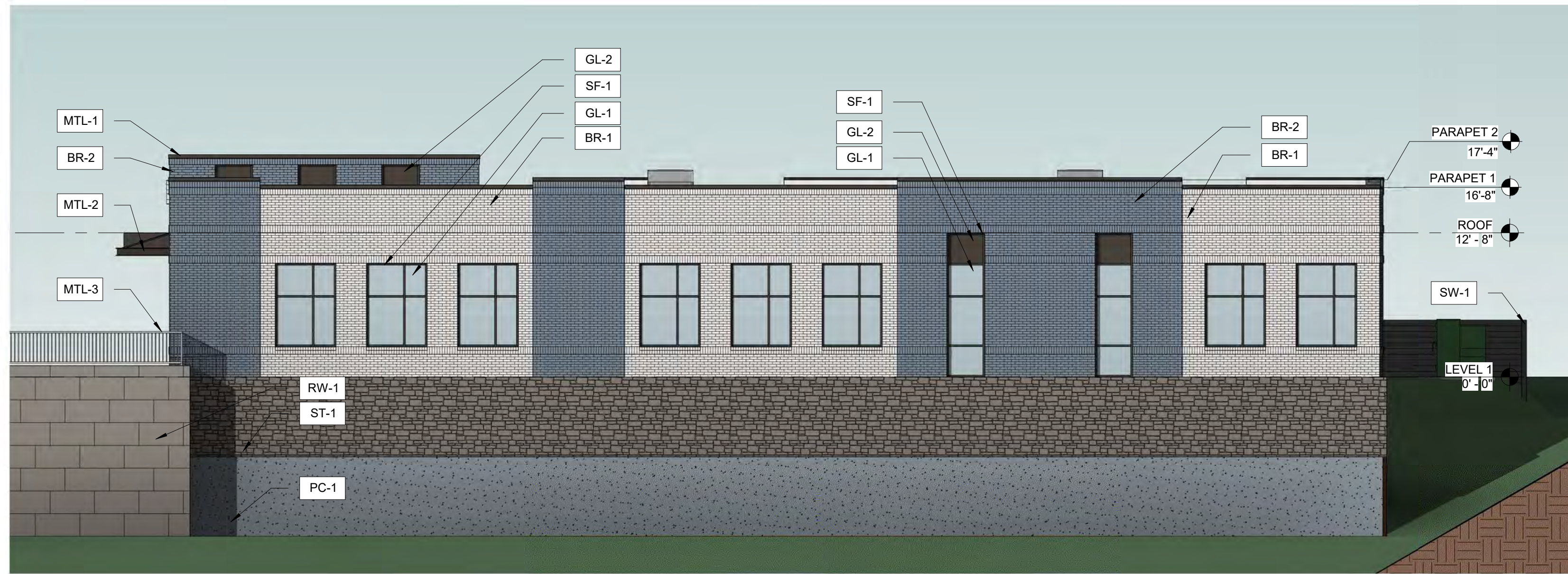
- ELECTRICAL TRANSFORMER AND UTILITY-RELATED EQUIPMENT SCREENED WITH SITE WALL AND/OR LANDSCAPE.
- ROOF DRAIN LEADERS WILL BE CONCEALED WITHIN THE BUILDING ENVELOPE - NO SURFACE-MOUNTED DOWNSPOUTS.
- ROOFTOP HVAC EQUIPMENT SIZE IS ESTIMATED AND WILL BE SCREENED FROM VIEW FROM RIGHTS-OF-WAY.

Received
November 5, 2024
RZ-24-0011 & VC-24-0008
Planning & Zoning

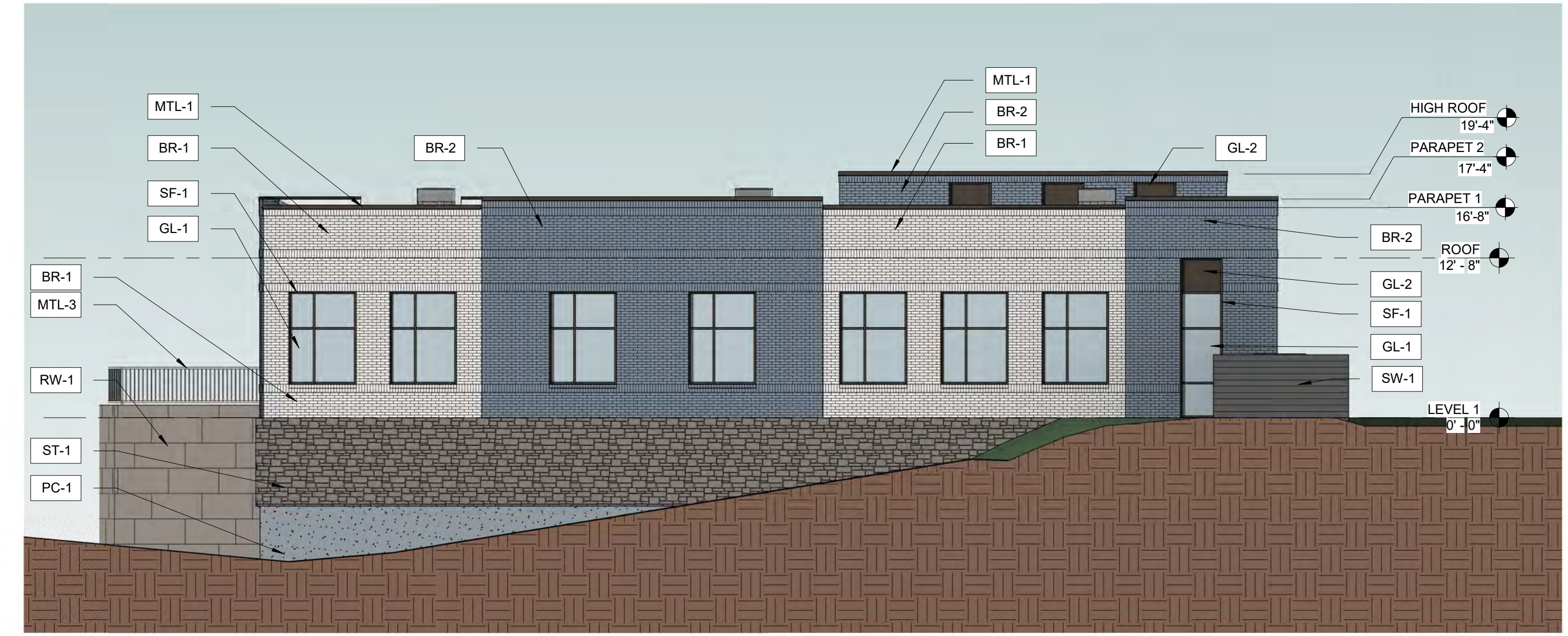
EXTERIOR FINISH SCHEDULE

| MARK | PANTONE | DESCRIPTION |
|-------|---------------------------|--|
| BR-1 | CG1U | RUNNING BOND BRICK |
| BR-2 | 432U | RUNNING BOND BRICK |
| GL-1 | STOREFRONT GLAZING | GLASS |
| GL-2 | STOREFRONT GLAZING - GRAY | OPAQUE GLASS SPANDREL PANEL |
| MTL-1 | CHARCOAL GRAY | PREFINISHED METAL COPING |
| MTL-2 | CHARCOAL GRAY | ANODIZED ALUMINUM TRIM |
| MTL-3 | GRAY | PAINTED METAL RAILING |
| PC-1 | 429U | PAINTED CONCRETE STEM WALL |
| RW-1 | 7531U | MODULAR SITE RETAINING WALL W/ CAST STONE FINISH |
| SF-1 | CHARCOAL GRAY | PREFINISHED ALUMINUM STOREFRONT |
| ST-1 | B7U | CULTURED STONE VENEER |
| SW-1 | GRAY | PREFINISHED METAL SCREEN WALL |

| ELEVATION | MATERIAL | MATERIAL S.F. | MATERIAL | MATERIAL S.F. | MATERIAL | MATERIAL S.F. | PERCENT REQUIRED | PERCENT PROVIDED |
|-----------|----------|---------------|----------|---------------|----------|---------------|------------------|------------------|
| NORTH | BRICK | 1,462 SF | GLASS | 414 SF | STONE | 726 SF | 75% | 75% |
| SOUTH | BRICK | 1,415 SF | GLASS | 484 SF | STONE | 0 SF | 75% | 100% |
| EAST | BRICK | 816 SF | GLASS | 347 SF | STONE | 250 SF | 75% | 100% |
| WEST | BRICK | 1,118 SF | GLASS | 335 SF | STONE | 367 SF | 75% | 95% |



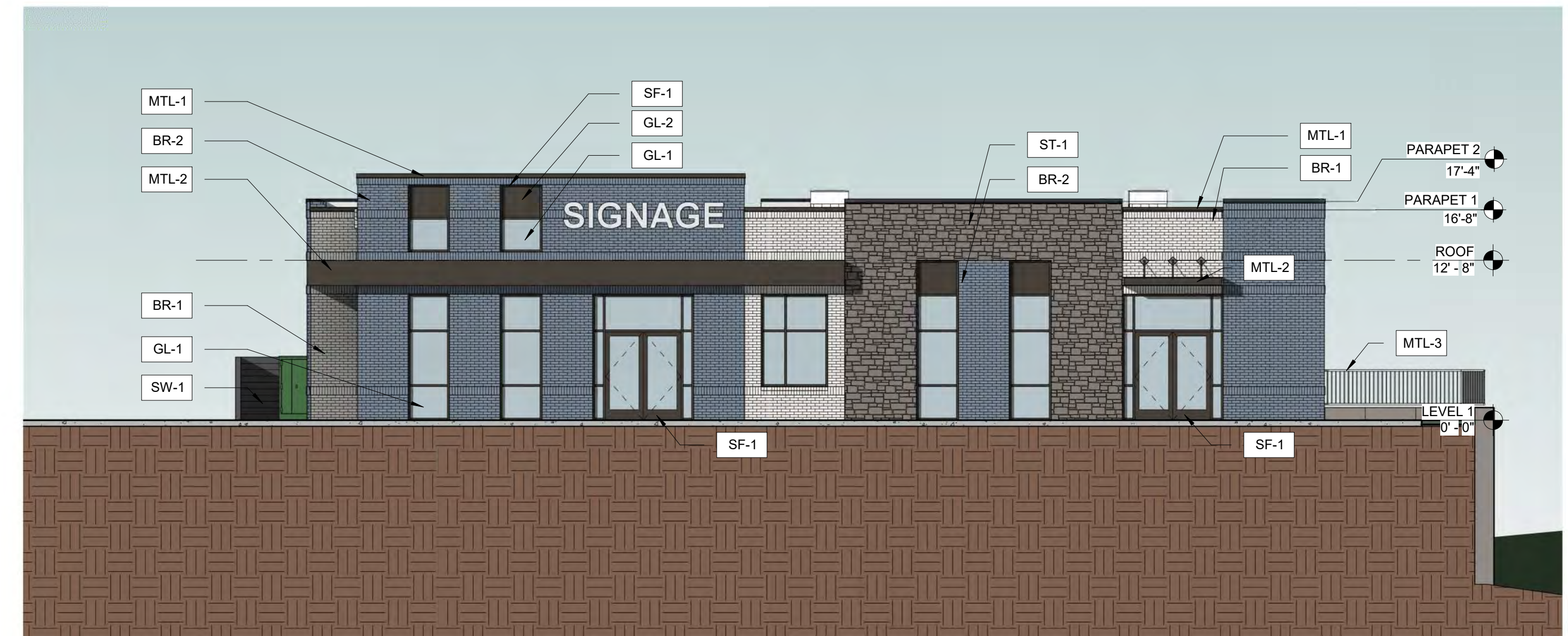
④ NORTH ELEVATION
1/8" = 1'-0"



③ WEST ELEVATION
1/8" = 1'-0"



② SOUTH ELEVATION
1/8" = 1'-0"



① EAST ELEVATION
1/8" = 1'-0"

5' TALL ROOFTOP UNITS ARE ADEQUATELY SCREENED BY PARAPETS AT OLD ALABAMA ROAD APPROACH



Received
November 5, 2024
RZ-24-0011 & VC-24-0008
Planning & Zoning

5' TALL ROOFTOP UNITS ARE ADEQUATELY SCREENED BY PARAPETS AT JONES BRIDGE ROAD APPROACH

